

209 258 Nelson's Court, New Westminster

\$639,900



Welcome to The Columbia by Wesgroup, the NEWEST addition to the vibrant Brewery District! Presenting one of the BEST floor plans offered in this tower, this bright and open 2 bed 2 bath home has it all! NE views of the river with Mt. Baker peeking out in the backdrop, open concept living area with bedrooms on opposite wings, Master bedroom walk-in closet, quality KitchenAid appliances and so much more. Avoid the elevator traffic w/ easy access through the garden area. Amazing opportunity & value whether you are a first-time buyer, investor, upsizing, or downsizing. Parking + storage included. GST PAID BY THE SELLER! Virtual walkthrough → Matterport: <https://my.matterport.com/show/?m=CbQqbdZkodx>. Call for an appointment today!

KEY INFORMATION

MLS® R2476221

Residential Attached

Sapperton

2 Bedrooms

2 Bathrooms

905 SF

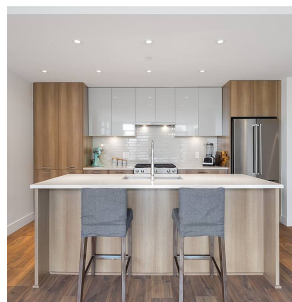
\$511.10 Maintenance Fees

FEATURES

Year Built: 2020

Views: MOUNTAIN & RIVER

Listed By: rennie & associates realty ltd.



Matthew Lee
778.882.2673
mlee@rennie.com
rennie.com/matthewlee

rennie