

Ph-g 630 Roche Point Drive, North Vancouver

\$768,000



Don't miss out on this one! Large, bright, tastefully finished 2 Bedroom and a den Penthouse located at the edge of a forest and the Seymour Golf Course. The open plan with large dining room and 13 foot vaulted ceiling living room with cozy gas fireplace are perfect for entertaining and walks out to the amazing south facing patio. Included are 2 parking stalls and 1 storage locker. The building is centrally located at the end of a quiet cul-de-sac with green belt and trails at your doorstep. Close to Parkgate Village amenities including transit, recreation and shopping, Mt Seymour, Northland Golf Course and Deep Cove. Call today!

KEY INFORMATION

MLS® R2476866

Residential Attached

Roche Point

2 Bedrooms

2 Bathrooms

1,252 SF

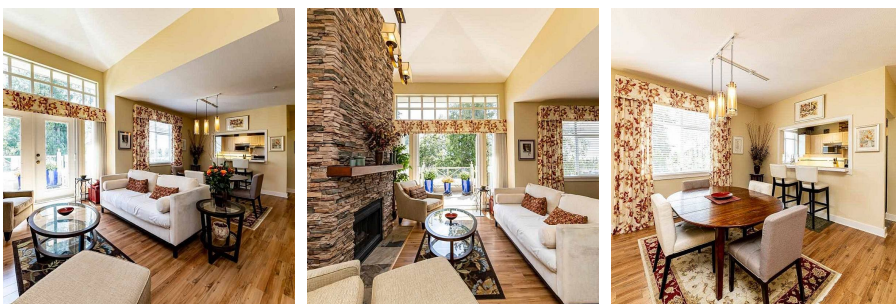
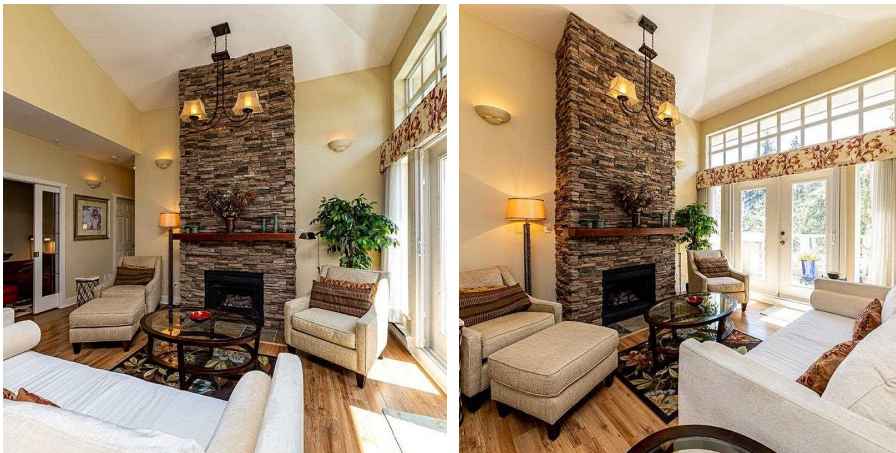
\$528.28 Maintenance Fees

FEATURES

Year Built: 1996

Views: South exposure & forest

Listed By: rennie & associates realty ltd.



Rachel Blades

778.834.6666

rblades@rennie.com

rennie.com/rachelblades

rennie