

# 2655 Granite Court, Coquitlam

\$1,538,000



Here is your chance to own a beautiful home situated on a quiet CUL DE SAC in the desirable Westwood Plateau area. This private 7000 SQ lot boasts incredible VIEWS of the city with nearly 3900 SQ of endless opportunity. Features include a comfortable master bedroom with in-floor bathroom HEATING, walk in closet, walk in shower and soaker tub. The downstairs has its own PRIVATE ENTRY with THREE bedrooms, KITCHEN, comfortable family room, and W/D to generate a MASSIVE amount of rental income. The backyard offers a perfectly manicured garden and walk out patio for those unforgettable family moments. The garage is big enough to fit two full size cars. Steps away from Bramblewood Elementary, Coquitlam Crunch, transit. HERITAGEWOODS/EAGLEMOUNTAIN CATCHMENT. Fall in love with your dream home today!

## KEY INFORMATION

MLS® R2478712

Residential Detached

Westwood Plateau

8 Bedrooms

4 Bathrooms

3,886 SF

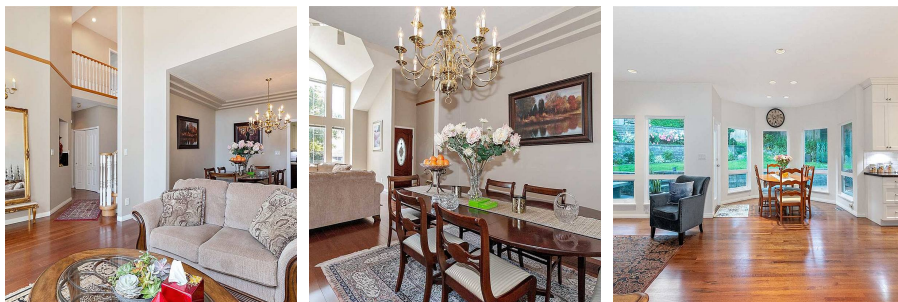
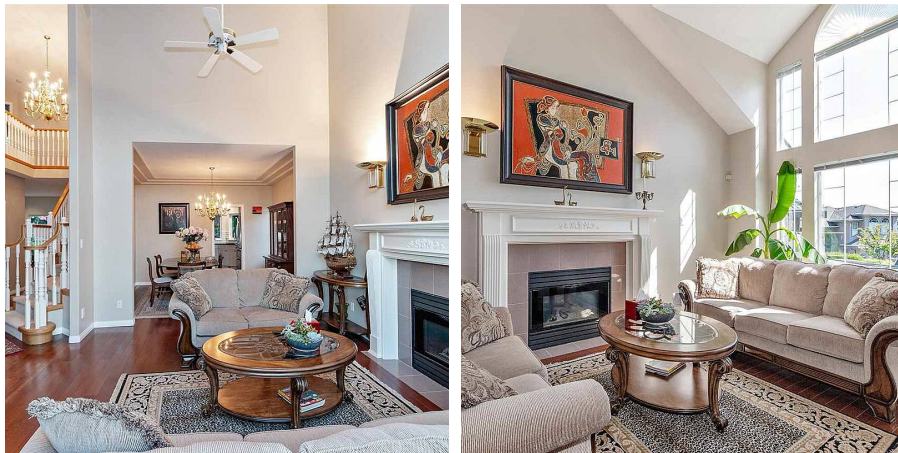
6,997 SF Lot

## FEATURES

Year Built: 1992

Views: CITY

Listed By: rennie & associates realty ltd.



**Eric Zamora** PREC\*  
778.389.4556  
ezamora@rennie.com  
rennie.com/ericzamora

**rennie**