

2238 Adanac Street, Vancouver

\$1,580,000



MOVE IN SEPTEMBER 2020! Stunning Architrix designed 1/2 duplex facing Templeton Park with Mountain views! The open concept main floor is highlighted by engineered hardwood floors, Fisher Paykel appliance package, gas range, quartz countertops, 12' wide floor to ceiling windows, and beautiful Oak millwork. Upper floor features master with generous walk-in closet and ensuite, plus 2 more bedrooms all with tall vaulted ceilings. This home is highlighted by fantastic indoor/outdoor connection with oversized sliding doors, ideal for outdoor entertaining. Includes enclosed one car garage with an extra parking pad. BONUS airbnb lock off potential! Construction walkthroughs are available upon request.

KEY INFORMATION

MLS® R2479346

Residential Attached

Hastings

3 Bedrooms

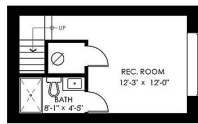
4 Bathrooms

1,728 SF

FEATURES

Year Built: 2020

Listed By: rennie & associates realty ltd.



2238 Adanac St.
Vancouver, BC

Main Floor	6
Upper Floor	7
Lower Floor	3
Total	17

Lower Floor: 342 Sq. Ft.
Ceiling Height: 9' 0"



Lower Floor: 655 Sq. Ft.
Ceiling Height: 9' 0"

Upper Floor: 731 Sq. Ft.
Vaulted Ceiling Height: 12'-1"

Floor plan not suitable for architectural/construction purposes. ASH 2300 content used to calculate square footage. Buyer to verify.



Salina Kai PREC*
604.773.7013
skai@rennie.com
rennie.com/salinakai

rennie