

1106 6188 No. 3 Road, Richmond

\$829,900



Well kept Upper level North facing home featuring beautiful city & mountain views with access to Richmond-Brighthouse skytrain Station at your doorstep. Perfectly laid out 2 bedroom + 2 bath + balcony with plenty of custom wall cabinetry to maximize space. Bedrooms are separated & both have access to their own beautifully designed ensuite. Bonus: Master bedroom has a big walk in closet & double vanity ensuite including a stand up shower! Classic elegance inspired by global luxury hotels designed to meet LEED Silver with engineered laminate wood floors, Porter & Charles stainless steel appliances (gas range) + Fisher/Paykel fridge. Amenities include: Fitness centre, clubhouse, caretaker, guest suites & rooftop terrace w/garden plots. All that's missing is you! 1 large parking stall included.

KEY INFORMATION

MLS® R2480928

Residential Attached

Brighthouse

2 Bedrooms

2 Bathrooms

894 SF

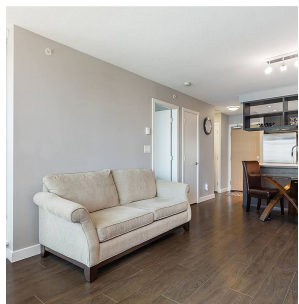
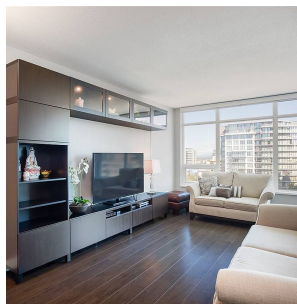
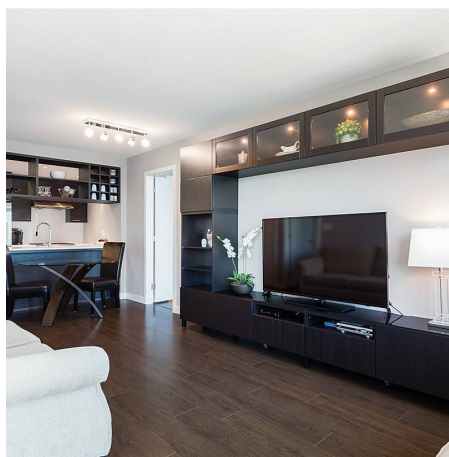
\$317.65 Maintenance Fees

FEATURES

Year Built: 2016

Views: CITY AND MOUNTAINS

Listed By: rennie & associates realty ltd.



Derek Kai PREC*
604.868.1666
dkai@rennie.com
rennie.com/derekkai

rennie