

# 12 7433 16th Street, Burnaby

\$760,000



Best available - Corner unit with 2 parkings and newer kitchen. Bonus front and back private patios!! Great location in Burnaby with walking distance to Edmonds skytrain and minutes to Metrotown. Spacious and functional layout featuring 3 bedrooms and 3 bathrooms corner unit townhome with 2 parkings. Walking distance to skytrain station, Highgate mall, parks, schools, etc. Renovated kitchen and bathrooms in recent years and stainless steal appliances. Lovely large front patio and private back yard for summer BBQ's. House is facing east, west, and south. The living room has a corner gas fireplace, warm in the winter and cool in the summer. Bright and clean with natural light. The large master bedroom is located on the top floor. Amenity includes gym and meeting room. It won't last long.

## KEY INFORMATION

MLS® R2482113

Residential Attached

Edmonds

3 Bedrooms

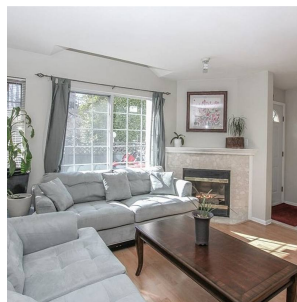
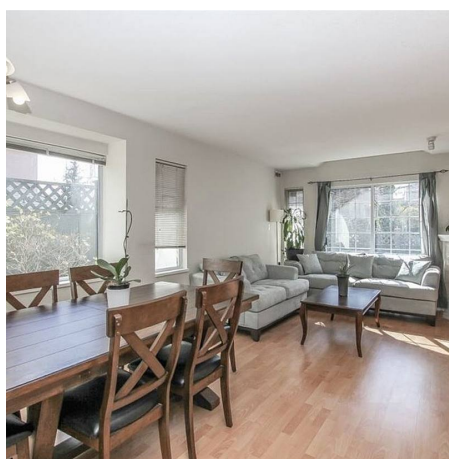
3 Bathrooms

1,394 SF

## FEATURES

Year Built: 1994

Listed By: rennie & associates realty ltd.



**Spencer Graffos**

604.781.7103

sgraffos@rennie.com

rennie.com/spencergraffos

**rennie**