

15310 28a Avenue, Surrey

\$1,100,000



Welcome home! This lovely rancher is tucked away in a quiet cul-de-sac . Spacious 1800 sq.ft 3 bdrm 2 bath well kept Rancher. This home has a great layout. Large riving room with attached dining room with vaulted ceiling. Master suite features new ensuite and walk in closet. 2 other generous sized bedrooms. New Kitchen off the family room which opens to your private fenced South facing backyard. Features include new paint, wainscotting and baseboards throughout, new flooring, updated bathrooms, newer stainless appliances, furnace 2007, security system, built in vac, blinds. Close to Southpoint shopping, transit, hwy.

KEY INFORMATION

MLS® R2482968

Residential Detached

King George Corridor

3 Bedrooms

2 Bathrooms

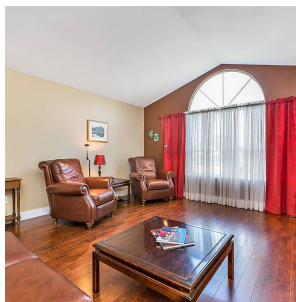
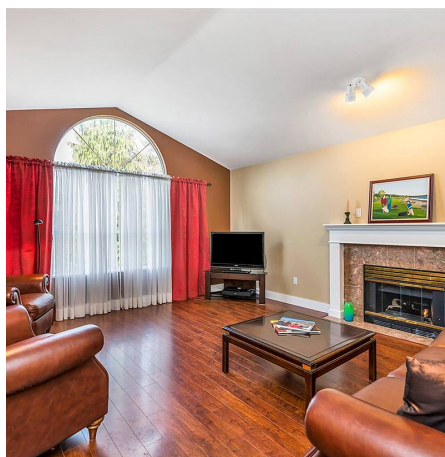
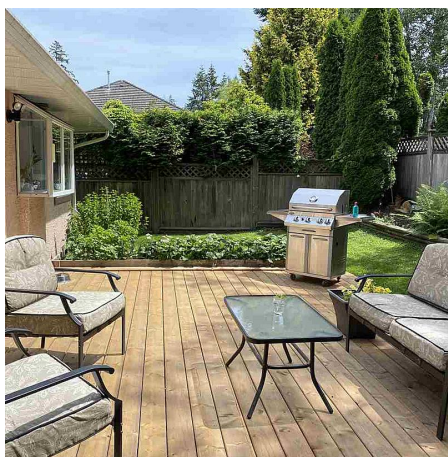
1,800 SF

7,443 SF Lot

FEATURES

Year Built: 1990

Listed By: Coldwell Banker Marquise Realty



rennie