

2601 530 Whiting Way, Coquitlam

\$499,900



Location! Location! Location! This is Onni's masterpiece project - Brookmere - located just steps away from the vibrant, upcoming Lougheed Mall Centre. Open lay-out, high up on the 26th floor with amazing panoramic view! Clean luxury design, lots of natural light throughout, beautiful kitchen-aid appliance package, extra large sized waterfall kitchen island and more than enough cabinet storage space for the master chef! Amazing amenities such as concierge, large party room & games room, theater, outdoor playground and guest suite. Rentals allowed, 1 private parking, and 1 storage locker. Act fast!

KEY INFORMATION

MLS® R2483688

Residential Attached

Coquitlam West

1 Bedroom

1 Bathroom

548 SF

\$219.62 Maintenance Fees

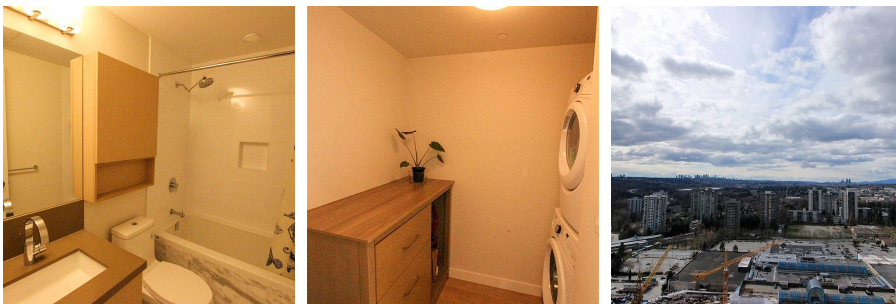


FEATURES

Year Built: 2019

Views: DOWNTOWN PANORAMIC VIEW

Listed By: rennie & associates realty ltd.



Andy Mah PREC*
604.779.9382
amah@rennie.com
rennie.com/andymah

rennie