

113 2150 Brunswick Street, Vancouver

\$638,000



Move right into this two bedroom & den home with a private sunny outdoor patio! Enjoy the convenience of entering & exiting your home freely without the need of taking an elevator. Renovated with chestnut laminate floors, Douglass Hunter blinds, updated lighting, & more. Grand Master bedroom that fits a King- sized bed! Spacious living room with a separate area for dining. An in-suite storage area that makes a perfect den. Well run & managed building that has updated its plumbing, windows, balconies & sectional walls with a rainscreen stucco wall system. Incomparable SOMA location that is walking distance to parks, transit, coffee & great eateries. Secured parking & storage. Pets & rentals allowed. A savvy purchasing opportunity with the new Skytrain line. Future development possibilities.

KEY INFORMATION

MLS® R2485638

Residential Attached

Mount Pleasant

2 Bedrooms

1 Bathroom

809 SF

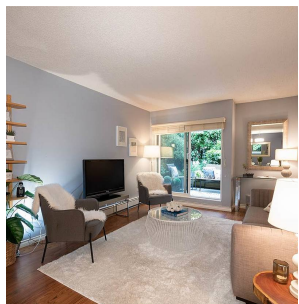
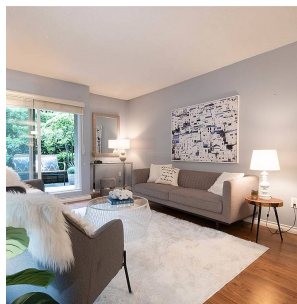
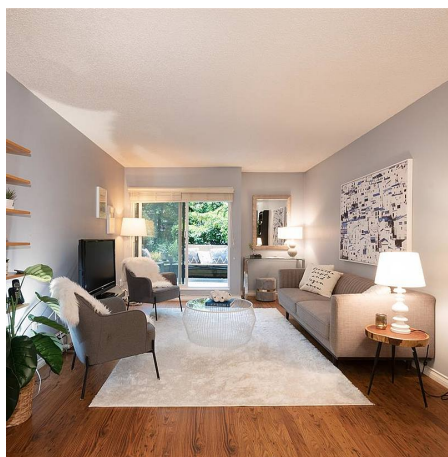
\$360.00 Maintenance Fees

FEATURES

Year Built: 1982

Views: Cedar Trees

Listed By: rennie & associates realty ltd.



Ross Leathley
604.802.5468
rleathley@rennie.com
rennie.com/rossleathley

rennie