

22 6300 London Road, Richmond

\$759,000



Welcome home to your charming townhouse, perfectly located steps to London Landing Wharf and trails, ideal for cycling along the Steveston Harbour! Functional layout and modern touches including granite countertops, an open kitchen, gas fireplace, and 3 decks. Perfect for a growing family with a playground right outside the door! Only a 5 minute drive from Steveston Garry Point Park, amazing gyms, and Steveston's best restaurants including Diplomat bakery. Call today to book your private viewing! **Open House Saturday September 12th, between 2-4pm**

KEY INFORMATION

MLS® R2487109

Residential Attached

Steveston South

2 Bedrooms

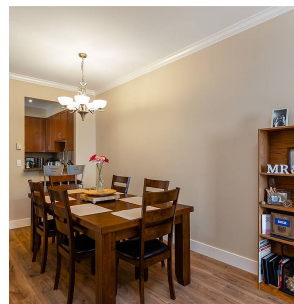
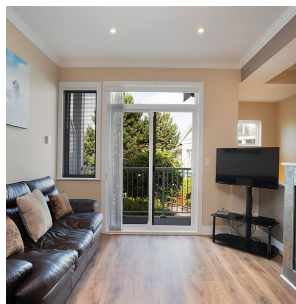
3 Bathrooms

1,292 SF

FEATURES

Year Built: 2005

Listed By: rennie & associates realty ltd.



Brandon Blue PREC*
604.999.7792
bblue@rennie.com
rennie.com/brandonblue

rennie