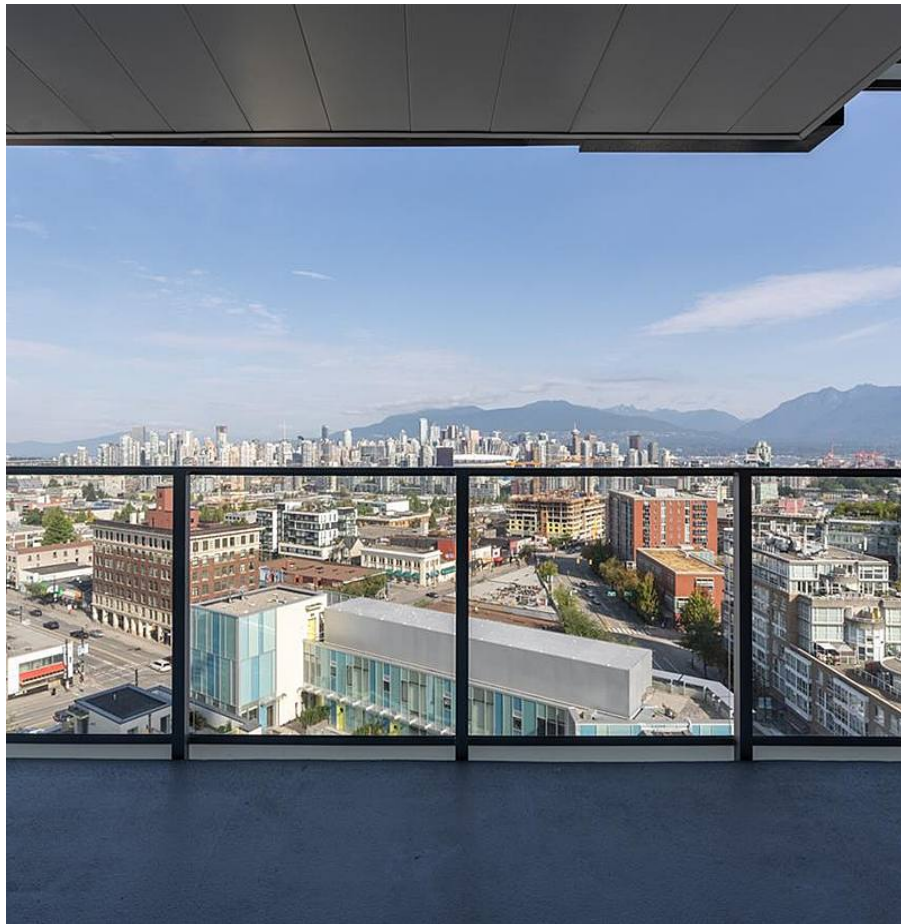


1612 285 E 10th Avenue, Vancouver

\$698,800



This stunning 585sf 1 bedroom + den offers modern clean lines & floor to ceiling windows with sweeping views of English Bay, City, Mountains out to Burrard Inlet & Vancouver's landmarks. Efficient floor plan & massive balcony extending full length of unit. Slick modern kitchen with high-end integrated appliances, abundance of Italian cabinet space & ample white quartzite counters. Geothermal keeps you cool in the summer & warm and cozy in the winter. Building offers 23,000sf of world class amenities including gym, bike workshop, garden plots, guest suite, car share & wash. Barely lived in & in immaculate condition, 1 parking & 2/5/10 warranty. Best location in town as Mount Pleasant offers restaurants, cafes, breweries & shopping. Quick walk to Seawall & steps to future Skytrain station.

KEY INFORMATION

MLS® R2487549

Residential Attached

Mount Pleasant

1 Bedroom

1 Bathroom

585 SF

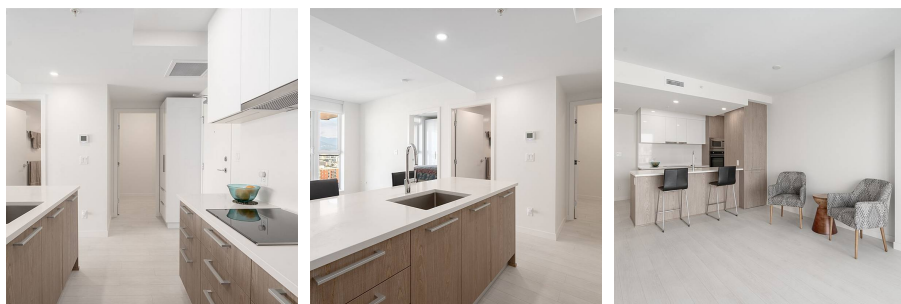
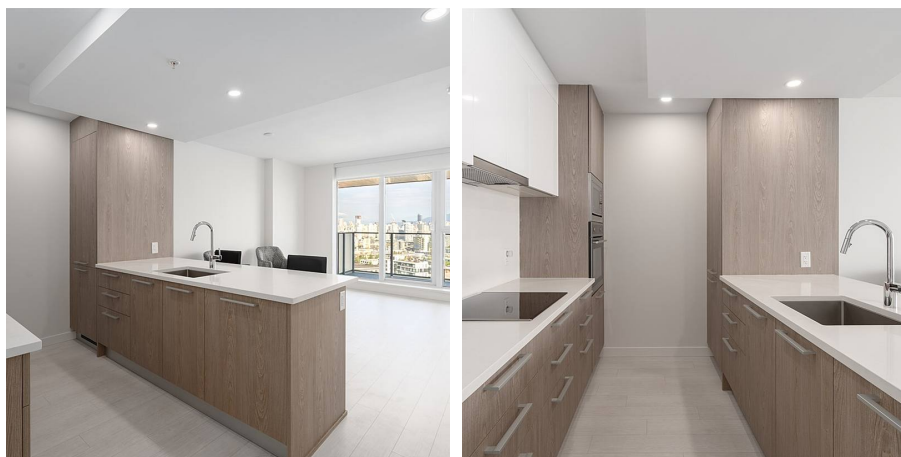
\$242.39 Maintenance Fees

FEATURES

Year Built: 2019

Views: City, Mountains, English Bay

Listed By: rennie & associates realty ltd.



Simon Lai PREC*
778.881.3603
slai@rennie.com
rennie.com/simonlai

rennie