

# 206 1816 Osprey Drive, Tsawwassen

\$760,000



Two-level popular duplex plan in Pelican Cove One with side by side double car garage. The main floor features an open plan with 14ft vaulted ceilings in the living room and a cozy gas fireplace. Comfortable living with forced air heating throughout, full sized stainless steel appliances, including a gas range and side-by-side washer/dryer in a separate spacious laundry room. The private fenced yard and sunny patio face the inner courtyard steps from the new park. Located just a short walk to the ocean and shopping centers Tsawwassen Mills and Tsawwassen Commons, Pelican Cove is situated in one of the Lower Mainland's most beautiful landscapes, close to top rated schools, golf, Point Roberts and 20 minutes to YVR.

## KEY INFORMATION

MLS® R2487667

Residential Attached

Ladner Rural

3 Bedrooms

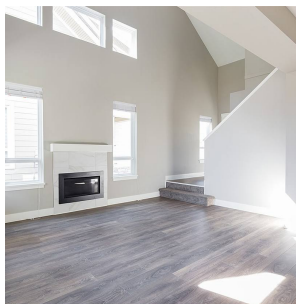
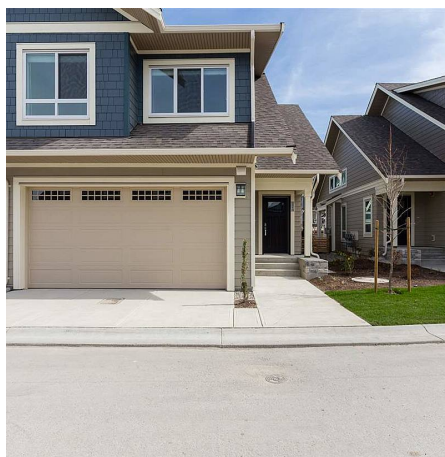
3 Bathrooms

1,530 SF

## FEATURES

Year Built: 2019

Listed By: rennie & associates realty ltd.



**Joanne Hoekstra**

604.722.6645

jhoekstra@rennie.com

rennie.com/joannehoekstra

**rennie**