

# 206 3070 Guildford Way, Coquitlam

\$449,900



Beautiful Home at LAKESIDE TERRACE! This NEWLY RENOVATED immaculate Bright East facing 2 Bed + 2 Bath home offers tranquil views of garden & ponds. Cozy up to the inviting living/ dining room w/ Lg bay style windows, laminate floors throughout, glass door to covered LARGE DECK to enjoy the peaceful surroundings. Chefs kitchen w/ plenty of storage, New S/S appliances. Unwind in the spacious bdrms. Lg Mst suite w/ dbl closets, soaker tub, separate shower w/ frameless door. The 2nd bdrm has adjoining 3 pc bath, perfect for guests. Resort-style amenities incl. guest suite, indoor pool, hot tubs, sauna, gym & meeting rm. BEST LOCATION! Walking distance to schools, Evergreen Skytrain, walking paths, Stunning Lafarge Lake & more! 1 Parking, 1 Locker incl.

## KEY INFORMATION

MLS® R2487739

Residential Attached

North Coquitlam

2 Bedrooms

2 Bathrooms

900 SF

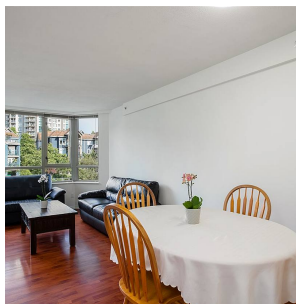
\$475.57 Maintenance Fees

## FEATURES

Year Built: 1995

Views: TRANQUIL VIEWS-GARDENS & PONDS

Listed By: rennie & associates realty ltd.



**Salina Kai** PREC\*  
604.773.7013  
skai@rennie.com  
rennie.com/salinakai



**Danny Chow** PREC\*  
604.765.2469  
dchow@rennie.com  
rennie.com/dannychow

**rennie**