

# 425 W 28th Avenue, Vancouver

\$3,788,000



Immaculate custom built 4483 sq.ft. 3 level home with beautiful city and mountain views. Situated on quiet street with massive 58' x 128'.93 foot lot that may potentially accommodate ten townhouses one day in the future. No expense spared in construction and finishes, open floor plan, high ceilings, huge open gourmet kitchen, all top appliances, radiant heat on 3 levels. Finished basement, wine cellar with built in single car garage. Built by owner as a forever home with complete documentation, plans, specifications with history for this very special 11 year old home. One block to Queen Elizabeth Park, three blocks to Skytrain & Hillcrest Community Centre. Priced below assessed value, bring your most discerning buyer. Currently rented until end of August 2020. By appointment only.

## KEY INFORMATION

MLS® R2487893

Residential Detached

Cambie

7 Bedrooms

4 Bathrooms

4,483 SF

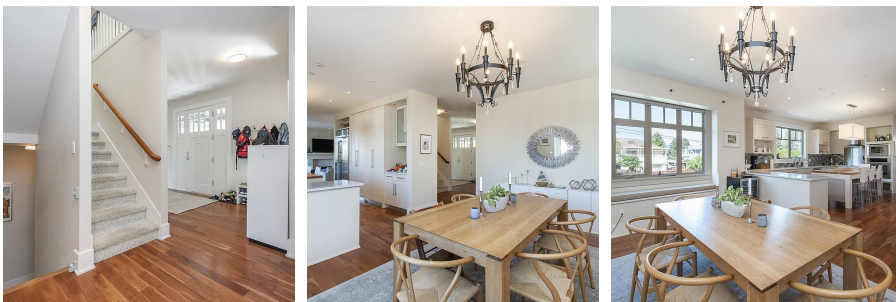
7,477 SF Lot

## FEATURES

Year Built: 2009

Views: NORTHERN CITY & MOUNTAIN VIEW

Listed By: rennie & associates realty ltd.



**Simon Lai** PREC\*  
778.881.3603  
slai@rennie.com  
rennie.com/simonlai

**rennie**