

Ph1008 3451 Sawmill Crescent, Vancouver

\$899,900



East facing penthouse 10th level 2bed + flex , with 1110sqft roof deck facing South East, with spectacular view of the river and greenery . Open concept layout with bedroom separated & spacious walk in closet with built in shelving in the master. Large living area and dining, stunning kitchen w/ Jenn Air appliances, gas range, wall oven, high efficiency heating&cooling system. Quartet is just steps to Save-On, restaurants, banks, Shoppers, Starbucks, bank&shops. Amenities including entertaining chefs kitchen, 2 guest suites and access to Club Central, 14,000sqft of private fitness & aqua center, multipurpose court & more, onsite concierge, secure delivery storage for convenient pickup. 1 parking included.

KEY INFORMATION

MLS® R2487928

Residential Attached

South Marine

2 Bedrooms

2 Bathrooms

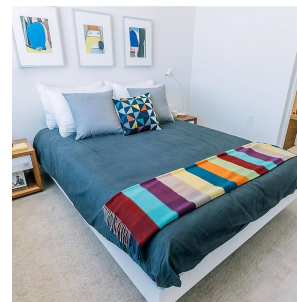
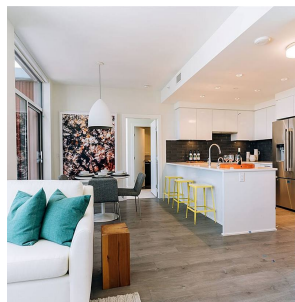
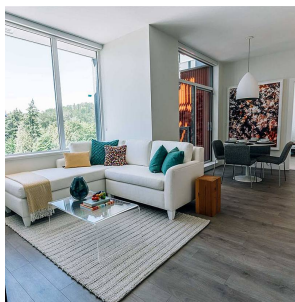
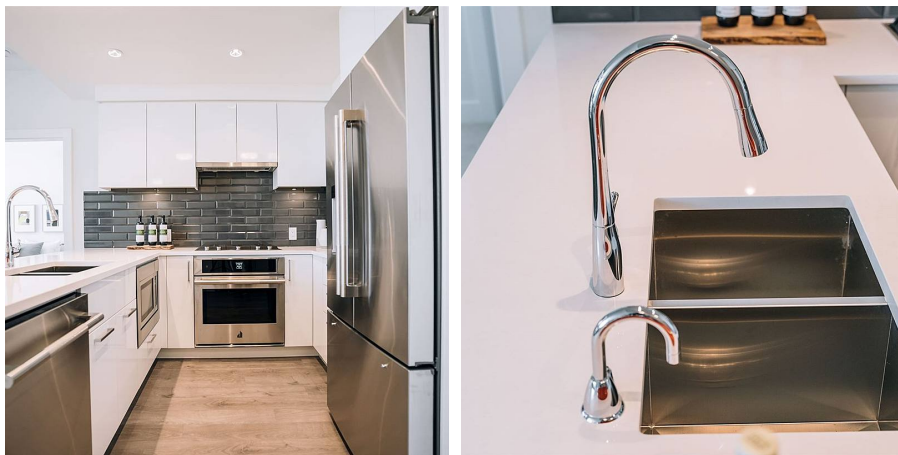
947 SF

\$568.20 Maintenance Fees

FEATURES

Year Built: 2020

Listed By: rennie & associates realty ltd.



Hanson Lu PREC*
604.787.2578
hlu@rennie.com
rennie.com/hansonlu

rennie