

51 8533 Cumberland Place, Burnaby

\$988,000



Very rare end-unit 4 bedroom townhome at Chancery Lane in Cariboo Heights. The complex is surrounded by a greenbelt in a quiet cul-de-sac location. Over 1,500 sq. ft. designed to accommodate a growing family & house-sized furniture. 3 bedrooms up & one separated for maximum privacy in the below with its own ensuite. Main floor offers a good size living and dining areas with a powder room. Features include 9' ceilings on the main level, S/S appliances, new hot water tank, huge private fenced yard (500+ sq.ft.), sun deck & side-by-side double garage with installed 220V EV charger (extra 2 parking spots in the driveway). Convenient location just minutes from Hwy 1, SFU & Vancouver. Face masks are required.

KEY INFORMATION

MLS® R2490580

Residential Attached

The Crest

4 Bedrooms

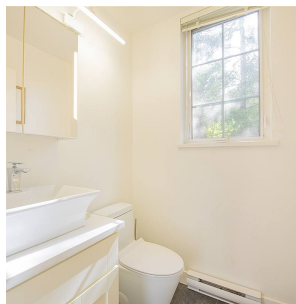
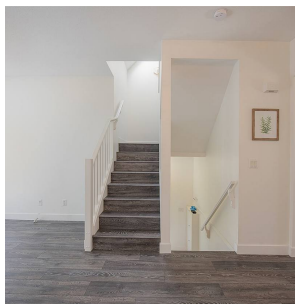
4 Bathrooms

1,563 SF

FEATURES

Year Built: 2006

Listed By: rennie & associates realty ltd.



Eric Zamora PREC*
778.389.4556
ezamora@rennie.com
rennie.com/ericzamora

rennie