

# 1106 988 Quayside Drive, New Westminster

\$474,800



Downtown New West's most coveted building: RiverSky2 by BOSA! Building features include: fully equipped gym, meeting + yoga room, BBQ area, concierge, & party room. Home 1106 features Fraser River & Mt. Baker views, top of the line finishings + open concept kitchen with a gas stove, premium slide out hood fan, soft-closed cabinet doors, built in microwave, designer composite stone counters, integrated refrigerator w/ bottom freezer and integrated dishwasher. Impeccable location with the Waterfront Esplanade boardwalk/seating, Craft Cafe, Boathouse, Inn of Quay just at your door steps. Skytrain is steps away + 25 mins from downtown Vancouver, 15 mins from Metrotown + 10mins from SFU Surrey. 200m to NW plaza/ bus terminal & River Market. Open Oct 4 @3-4pm. Video in link!

## KEY INFORMATION

MLS® R2495247

Residential Attached

Quay

1 Bedroom

1 Bathroom

554 SF

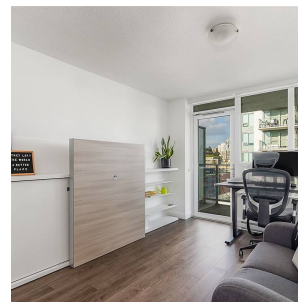
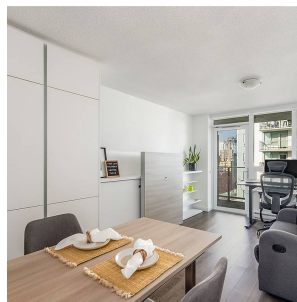
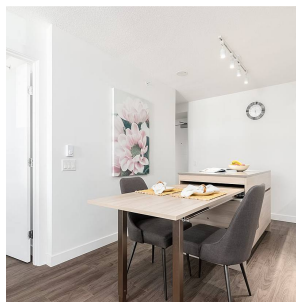
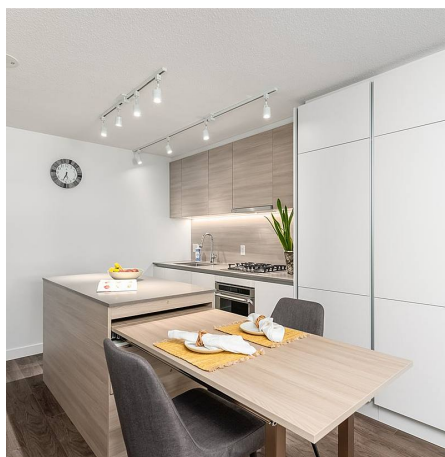
\$239.28 Maintenance Fees

## FEATURES

Year Built: 2019

Views: COURTYARD + FRASER RIVER

Listed By: rennie & associates realty ltd.



**Jane Chu** PREC\*  
778.886.3303  
janechu@rennie.com  
rennie.com/janechu

**rennie**