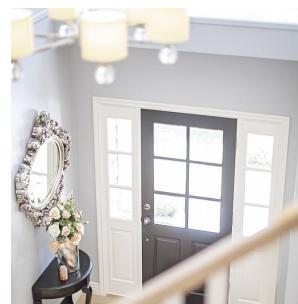
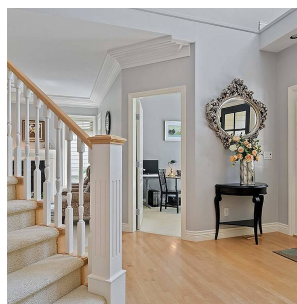
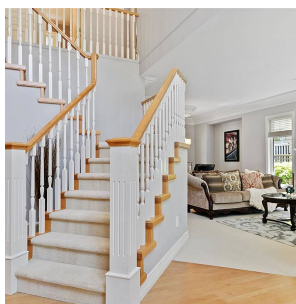
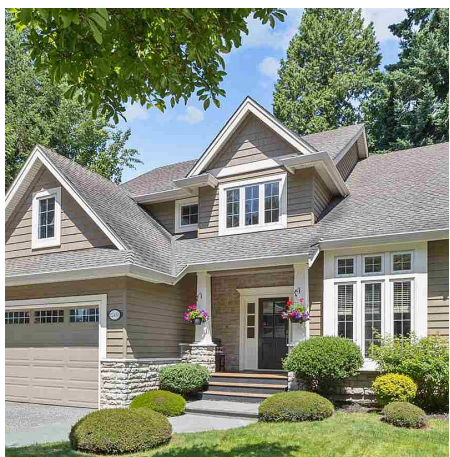


12451 23a Avenue, Surrey

\$1,649,000



Exquisite craftsman home in quiet cul-de-sac in Crescent Beach south Surrey. This extreme well maintained home features high-ceiling at entrance, big office, open floor plan w formal dining/living rm, open kitchen w granite counter tops, maple cabinets, maple hardwood floors, large kitchen island and SS appliances. 4 bedrooms up, master bedroom w custom shelving in walk-in closet, Basement features huge rec room, gym/bar area and extra guest bedroom, separate entrance, easily convert to suite. Fenced private backyard backing onto a park, walking distance to Christopher steps and beaches/schools/parks/shops, 10-min drive to White Rock Pier and Marine Dr. shopping and many fine restaurants. Perfect to live in this park-like neighbourhood, yet enjoy the convenience. Come see it yourself.Open

KEY INFORMATION

MLS® R2495444

Residential Detached

Crescent Beach

4 Bedrooms

4 Bathrooms

3,824 SF

6,168 SF Lot

FEATURES

Year Built: 2000

Listed By: rennie & associates realty ltd.



Calvin Jiang
604.961.1698
cjiang@rennie.com
rennie.com/calvinjiang

rennie