

303 668 Columbia Street, New Westminster

\$499,900



SLEEK & MODERN & ZEN, 1 Bed CITY VIEWS in the desirable Trapp + Holbrook building in the soul of historic Downtown New Westminster. Pristine Kitchen Features: classy cabinets, quartz counters, glass tile backsplash w/stainless steel appliances. Walking distance to Quay, Coffee Shops & Restaurants. Located just one block from the SKYTRAIN and Pier Park. BONUS: 13 Ft Loft like ceilings, exposed brick wall, extreme privacy with NW Exposure & largest 1 bed floorplan in the building! Includes: In-suite Laundry, 1 Parking, 1 Storage, access to gym, clubhouse and GARDEN DECK w/ Fire Pit & Lounge seating.

KEY INFORMATION

MLS® R2497570

Residential Attached

Quay

1 Bedroom

1 Bathroom

644 SF

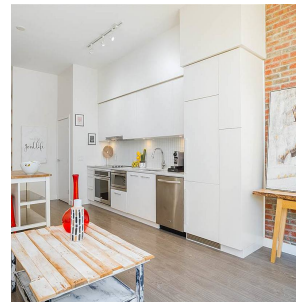
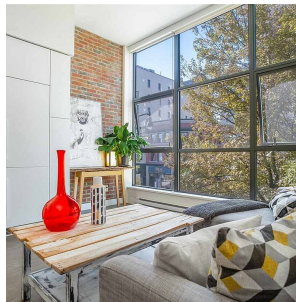
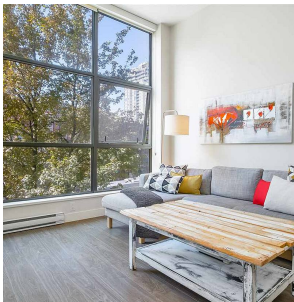
\$299.72 Maintenance Fees

FEATURES

Year Built: 2015

Views: CITY!

Listed By: rennie & associates realty ltd.



Shelly Vellani PREC*

604.710.3681

svellani@rennie.com

rennie.com/shellyvellani

rennie