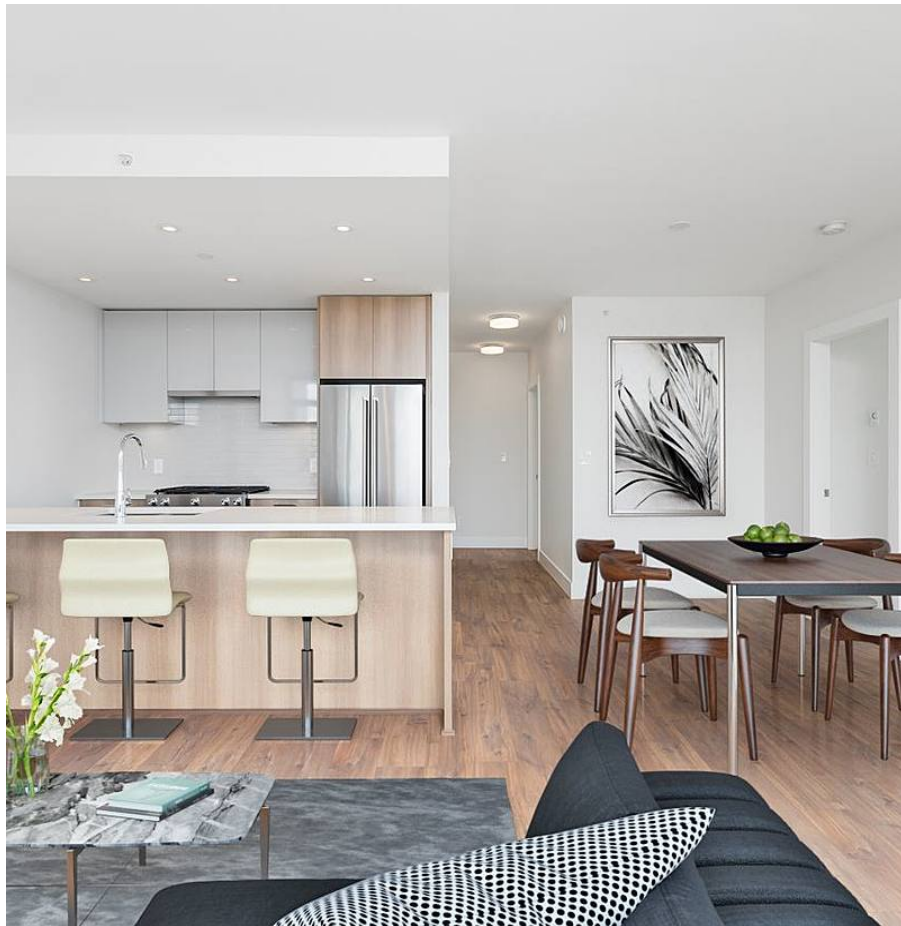


# 1107 258 Nelson's Court, New Westminster

\$769,900



The Columbia, Wesgroup's newest building located right in the Brewery District! RARE 3 bed, 2 bath corner unit that has large 190 SqFt wrap around patio with spectacular North East views from the 11th floor of the Fraser River and Mt Baker. This home features an amazing open layout with high quality finishes including Quartz counter tops, Kohler faucets, KitchenAid appliances and so much more. Master bedroom comes with walk-in closet and beautiful en suite. Just steps from Sapperton Skytrain Station, Browns Socialhouse and Starbucks, Save-on-food, Shoppers Drug Mart and minutes away from Richard McBride Elementary, Herbert Spencer Elementary and New Westminister Secondary school. Best part about the complex? Access to 10,000+ sq. ft. Private Indoor amenities at Club Centra

## KEY INFORMATION

MLS® R2499016

Residential Attached

Sapperton

3 Bedrooms

2 Bathrooms

1,060 SF

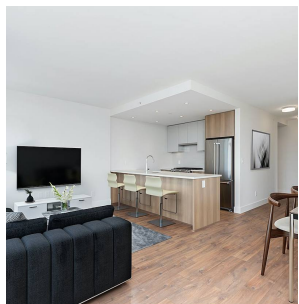
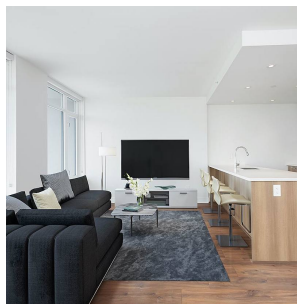
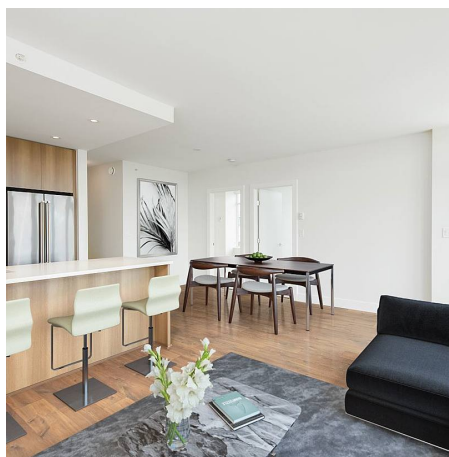
\$590.21 Maintenance Fees

## FEATURES

Year Built: 2020

Views: River/Mountains

Listed By: rennie & associates realty ltd.



**Simon Lai** PREC\*  
778.881.3603  
slai@rennie.com  
rennie.com/simonlai

**rennie**