

42 15588 32 Avenue, Surrey

\$648,000



Price below assessment! The Woods - Trendy town homes built by Gramercy in South Surrey. Spacious & bright townhouse with lots of windows plus 388' roof top patio, with gas & water hook ups. Main floor features a modern kitchen with SS appliances & quartz counter-top which opens to Living & Dining areas. BONUS is the live/work CD zoning for the office space and a powder room. Upper level features 3 bedrooms and 2 full baths. Features include 9' ceiling, 2" blinds, window & roof top patio door screens, large tandem garage. Within blocks of Morgan Creek Golf Course, Grandview Shopping and highway. Showing Sunday 1-3pm by appointment only.

KEY INFORMATION

MLS® R2499042

Residential Attached

Grandview Surrey

3 Bedrooms

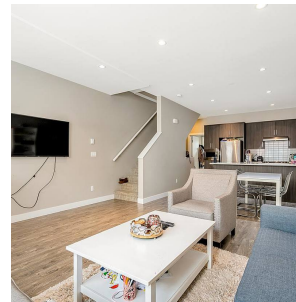
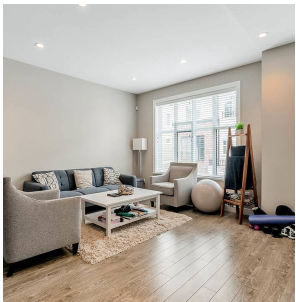
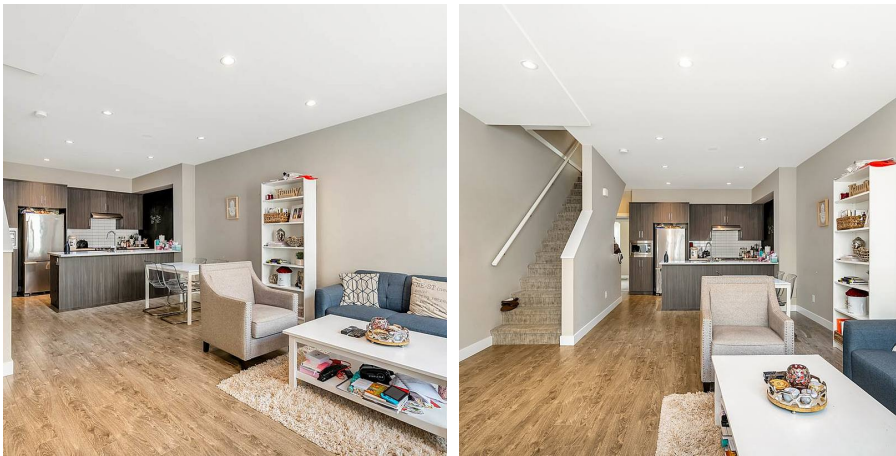
3 Bathrooms

1,527 SF

FEATURES

Year Built: 2014

Listed By: rennie & associates realty ltd.



Vivien Ma PREC*
604.828.2268
vma@rennie.com
rennie.com/vivienma

rennie