

# Ph603 133 E 8th Avenue, Vancouver

\$1,575,000



Spectacular Penthouse Residence at Collection 45- When GBL Architects designed the grey and white C45 building atop of the rise at 8th just west of Main, they knew they were designing a Mt Pleasant landmark. One of 2 west-facing penthouses on a floor with only 4 suites, this remarkable 1185 sf 2 bed 2 bath home with 600 sf private roof deck makes this a rare find. Natural light pours in over an open plan with subtle delineation between living, dining, and kitchen makes for easy living and entertaining. Air conditioned with mobile lighting control, matte oak wood floors, bespoke track lighting, custom closets, and discreet Sonos install speak to the attention to detail and quality throughout this immaculate home by its only owner.

## KEY INFORMATION

MLS® R2500369

Residential Attached

Mount Pleasant

2 Bedrooms

2 Bathrooms

1,185 SF

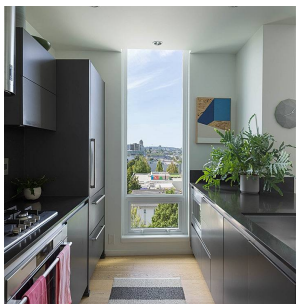
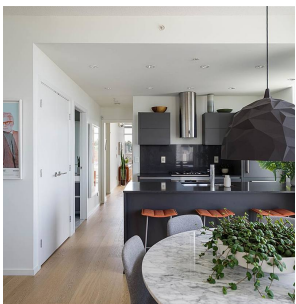
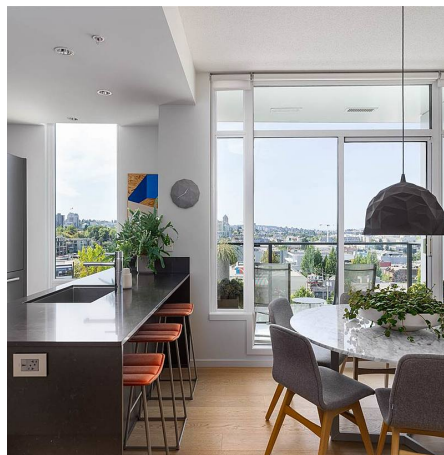
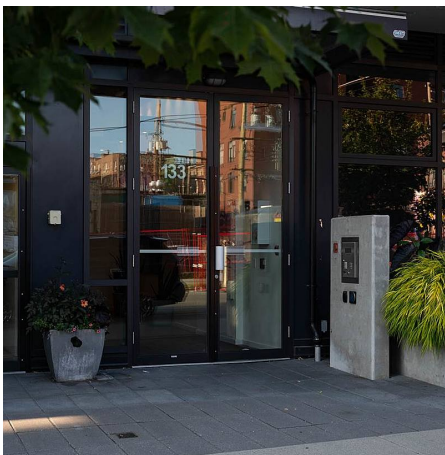
\$455.54 Maintenance Fees

## FEATURES

Year Built: 2013

Views: SWEEPING CITY, WATER & MOUNTAIN

Listed By: rennie & associates realty ltd.



**Christopher Boyd** PREC\*  
604.351.0533  
cboyd@rennie.com  
rennie.com/christopherboyd

**rennie**