

103 5860 Dover Crescent, Richmond

\$448,000



AN EXCEPTIONALLY RARE FIND! Welcome to this very spacious & updated 713 sqft, 1 bed + 1 bath, ground floor home w/ spectacular courtyard & extra large private garden patio at highly desirable Lighthouse Place! A rainscreened & concrete building that backs onto River Road & the dyke & fronts on to Dover Park. Well laid out w/ large open living/dining areas, cozy gas fireplace, hardwood floors throughout, updated kitchen & bathroom, granite counters, brand new stainless steel fridge & dishwasher, brand new lighting fixtures & new paint. Excellent location & beautiful neighborhood, just minutes to the Airport, Olympic Oval, Richmond City Centre & easy access to Vancouver. Amenities include gym, bike room, & party room. 1 parking & 1 storage locker included.

KEY INFORMATION

MLS® R2502396

Residential Attached

Riverdale

1 Bedroom

1 Bathroom

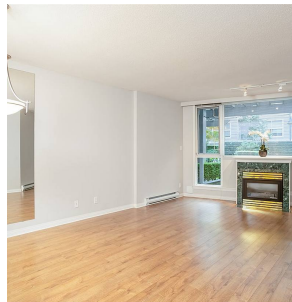
713 SF

\$297.79 Maintenance Fees

FEATURES

Year Built: 1997

Listed By: rennie & associates realty ltd.



Ryan Wong PREC*
604.551.7966
rwong@rennie.com
rennie.com/ryanwong

rennie