

# 205 7180 Barnet Road, Burnaby

\$749,900



This stunning 1028 sqft 2 BED and 1.5 BATH TOWNHOUSE has the best of everything! The only unit that does not have a condo underneath & gives a corner/duplex feel. The open courtyard provides privacy to the porch & separate entry into a unique layout & GOURMET kitchen with SS APPLIANCES & QUARTZ countertops. the 9FT CEILINGS allow light from all angles & MOUNTAIN VIEWS off 2 PATIOS! 2 spacious BDRMS & 4pc ensuite, with WALK IN CLOSET & VIEWS off the PRIVATE MASTER PATIO. The best location for families & investors, one of the most sought after neighbourhoods & best school catchment areas, including WESTRIDGE, N.B HIGH SCHOOL & SFU. Close to AMENITIES, TRAILS, Port Moody & quick transit to town. 3 YRS OLD, 2-5-10 Warranty. 2 PARKING & STORAGE, RENTALS & PETS ALLOWED. Open House Oct 10 2-4

## KEY INFORMATION

MLS® R2503682

Residential Attached

Westridge

2 Bedrooms

2 Bathrooms

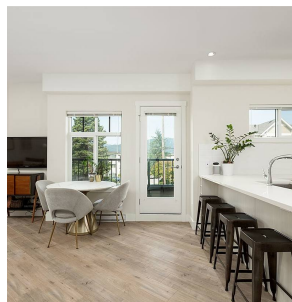
1,028 SF

## FEATURES

Year Built: 2017

Views: Mountain

Listed By: rennie & associates realty ltd.



**Tracy Lam** PREC\*  
778.688.8035  
tlam@rennie.com  
rennie.com/tracylam

**rennie**