

# 9 15 Forest Park Way, Port Moody

\$624,800



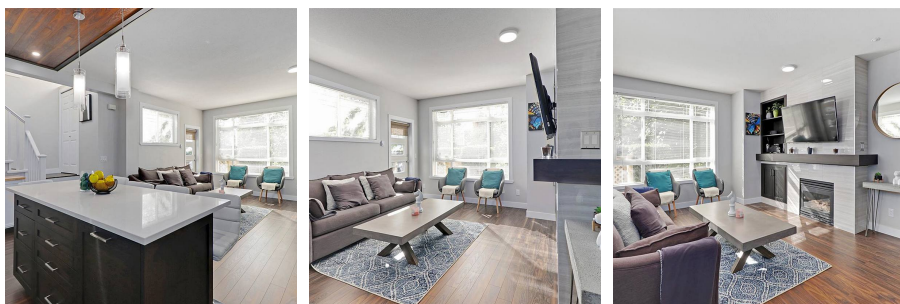
**\*RARELY AVAILABLE\*!** Whistler-inspired end unit in a quiet complex with gorgeous mountain views. Professionally renovated from top to bottom. South facing with lots of natural light and gorgeous evening sunsets. Large renovated patio facing green space to enjoy private dinners outside or family BBQs. Perfect location! Quick access to Evergreen line, West Coast Express, Rocky Point, Buntzen lake, gorgeous trails and so much more. Close to all levels of schools, daycares & shopping. A truly must-see. Virtual tour available. Open house Saturday October 3rd, 2:00 - 4:00

## KEY INFORMATION

MLS® R2503773  
Residential Attached  
Heritage Woods  
2 Bedrooms  
2 Bathrooms  
1,120 SF

## FEATURES

Year Built: 2000  
Views: TREES, GREENSPACE  
Listed By: rennie & associates realty ltd.



**Ryan O'Hearn** PREC\*  
778.384.2667  
rohearn@rennie.com  
rennie.com/ryanohearn

**rennie**