

2305 488 Sw Marine Drive, Vancouver

\$565,000



MARINE GATEWAY on the Canada Line is Vancouver's award-winning mixed-use, transit-oriented development. This vibrant hub at the heart of an emerging community features direct access to the Canada Line & bus transit, shops, services, residential living and offices. This One Bedroom home is an excellent layout, on a high floor offering panoramic WOW views of sunsets, Fraser River & city skylines and in immaculate condition - MOVE-IN READY! Includes a covered balcony with views, to enjoy year-round. At your doorstep: Marine Drive Canada Line Station, South Vancouver Bus Loop, car share, bike storage and more. At your doorstep - A one-stop shop for your daily needs - groceries, drugstore, fitness, banking, restaurants, cafes, movies and more! HIGH SCORES: Bike=83; Transit=79; Walk=78.

KEY INFORMATION

MLS® R2504057

Residential Attached

Marpole

1 Bedroom

1 Bathroom

494 SF

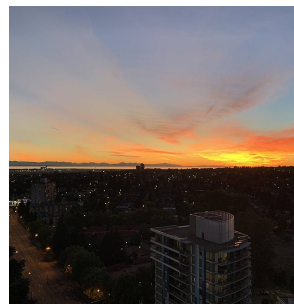
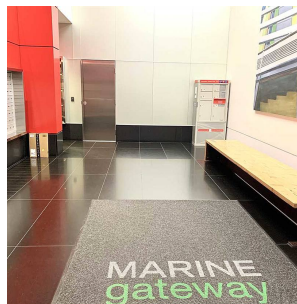
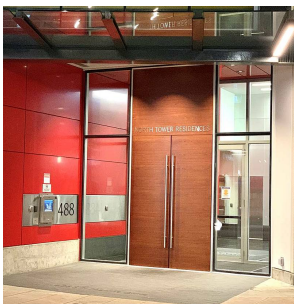
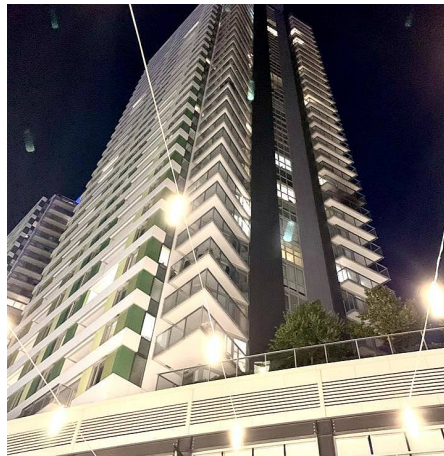
\$262.52 Maintenance Fees

FEATURES

Year Built: 2015

Views: SUNSETS, CITY, WATER

Listed By: rennie & associates realty ltd.



Phil Chang PREC*
604.754.6678
pchang@rennie.com
rennie.com/philchang

rennie