

2320 E 1st Avenue, Vancouver

\$2,300,000



INVESTORS/DEVELOPER Attention!! Land Assembly for sale on a existing development site to build upon existing Zoning RM-12N, designated as mins 3.5 storey Courtyard/Traditional Row-house and up 4-storey complex buildings. Prime value convenient location, in the heart of E.1st Ave and Nanaimo St.(commercial zoning is connected), close to all amenities. Bundled in a ROW of 4 Lots to a corner lot. Rarely available solid Vancouver Special 2 storey with back-lane separate entrance. Convenient location, close to bus, school, shopping. Start planning your build today!

KEY INFORMATION

MLS® R2504255

Residential Detached

Grandview Woodland

5 Bedrooms

3 Bathrooms

2,355 SF

3,581 SF Lot

FEATURES

Year Built: 1976

Views: Mountain

Listed By: Unilife Realty Inc.

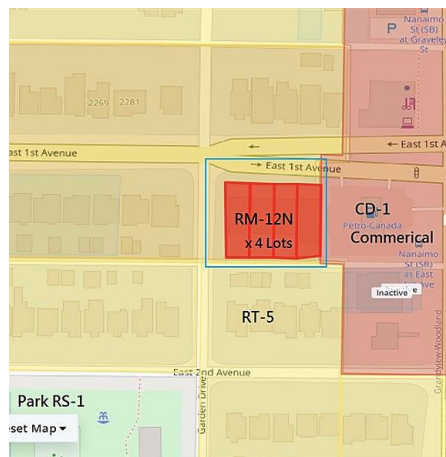


Figure 6.35: 4-Storey 'T' Typology on a 4-Lot Assembly

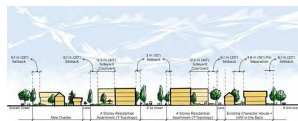


Figure 6.37: Grandview East 1st Avenue Typical Section (Courtyard Rowhouse Segment)

