

1903 288 Ungless Way, Port Moody

\$888,000



Welcome home to THE CRESCENDO, conveniently located in the heart of Port Moody! With breathtaking unobstructed MOUNTAIN VIEWS, this 1,299 sq ft, 2 Bedroom + Den + Storage/Pantry, 2 Full Bath, CORNER SUITE comes equipped with 2 SIDE BY SIDE parking stalls, 1 locker, NEW PAINT from head to toe, open concept living, floor to ceiling windows, cozy gas fireplace, granite countertops, s/s appliances, generous sized bedrooms/closets, & oversized private balcony perfect for entertaining or soaking in the views. Tons of space in the den area for home office or study area, with separate storage/pantry off the kitchen to store all of your daily needs. Only steps away are access to Inlet Centre SkyTrain, and all of the shops/restaurants. *OPEN HOUSE SUNDAY, NOVEMBER 1, 2-4PM*

KEY INFORMATION

MLS® R2507640

Residential Attached

North Shore Port Moody

2 Bedrooms

2 Bathrooms

1,302 SF

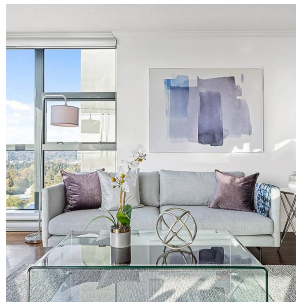
\$451.95 Maintenance Fees

FEATURES

Year Built: 2008

Views: MOUNTAIN, CITY

Listed By: rennie & associates realty ltd.



Eric Zamora PREC*
778.389.4556
ezamora@rennie.com
rennie.com/ericzamora



Brandon Price PREC*
604.765.9555
bprice@rennie.com
rennie.com/brandanprice

rennie