

2502 2225 Holdom Avenue, Burnaby

\$599,900



The Legacy, Built by Bosa! Welcome to the largest CORNER 1 bedroom & den in all of Brentwood right now! This bright and spacious open floorplan exhibits over 1000 SF of indoor & outdoor entertaining w/ample space for guests, formal dining area for dinner parties, or quiet evenings indoors in front of your cozy fireplace. An almost 400sf grand walk-out sundeck to enjoy morning coffees, & evening BBQ's provides for effortless entertaining. Feat:oversized floor to ceiling windows, granite counter tops & gas range. The bedroom allows for king size bed & includes his & her closets that expand to gives access to the ensuite. With proximity to groceries, shopping, award winning dining & Skytrain an elevator ride away, a seamless lifestyle awaits.

KEY INFORMATION

MLS® R2508171

Residential Attached

Central Burnaby

1 Bedroom

1 Bathroom

867 SF

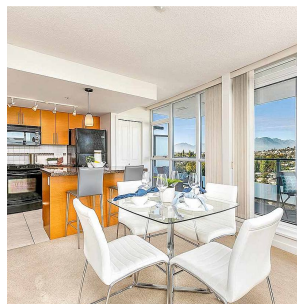
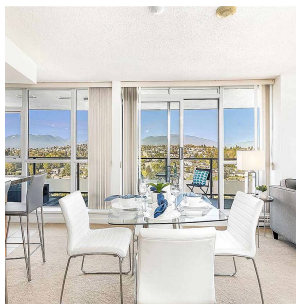
\$277.41 Maintenance Fees

FEATURES

Year Built: 2007

Views: MOUNTAIN

Listed By: rennie & associates realty ltd.



Shelly Vellani PREC*

604.710.3681

svellani@rennie.com

rennie.com/shellyvellani

rennie