

# 553 38 Smithe Street, Vancouver

\$668,000



Corner unit one bedroom with abundant of natural light. 567 SQFT & Flex at ONE PACIFIC. This home offers over-height ceilings, air-conditioning, open and efficient layout, wide plank engineered hardwood flooring with marble throughout. Enjoy the integrated MIELE appliances soft/close cabinetry, under-mount sinks & Quartz stone counter-tops. Benefit from 24 hr Concierge services & many CLUB ONE features such as its cantilever glass outdoor heated pool, hot tub, sauna/steam room, Sky Garden level community gardens, outdoor kitchen & fire pit and barbecue. The ideal home or investment in an exceptional location steps from the Seawall and Robson Street Destination. 1 locker included.

## KEY INFORMATION

MLS® R2508747

Residential Attached

Downtown

1 Bedroom

1 Bathroom

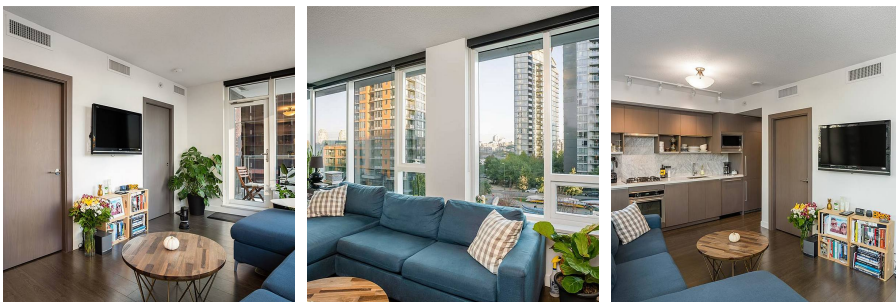
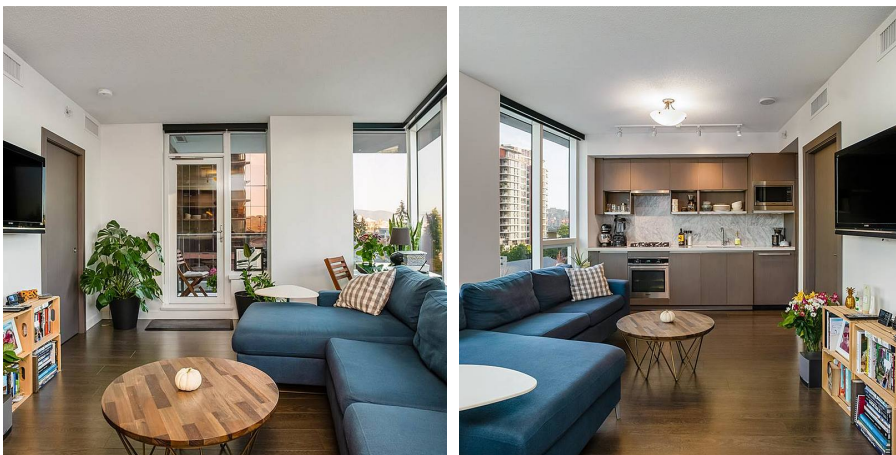
567 SF

\$305.75 Maintenance Fees

## FEATURES

Year Built: 2016

Listed By: rennie & associates realty ltd.



**Simon Lai** PREC\*  
778.881.3603  
slai@rennie.com  
rennie.com/simonslai

**rennie**