

# 214 1012 Auckland Street, New Westminster

\$599,999



Welcome to Capitol by Porte! Great location in central New Westminster. This 1 bed+Den+1 bath unit comes with a large terrace(686 Square feet), the large Den could be a 2nd bedroom or a very large storage room. The efficient floor plan features an open concept layout. 1 Parking included. Amenities include social lounge, fitness centre and kids playground. Only minutes walk to Skytrain Station, Shopping mall, schools, Douglas College and parks. A must see! 3D VR virtual tour: <https://my.matterport.com/show/?m=NGwyvPB7om7>

## KEY INFORMATION

MLS® R2508736

Residential Attached

Uptown

1 Bedroom

1 Bathroom

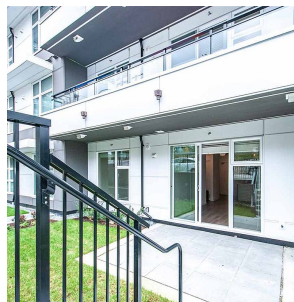
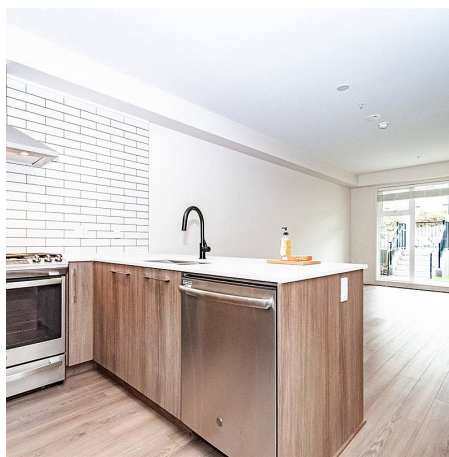
710 SF

\$340.97 Maintenance Fees

## FEATURES

Year Built: 2020

Listed By: Nu Stream Realty Inc.



rennie