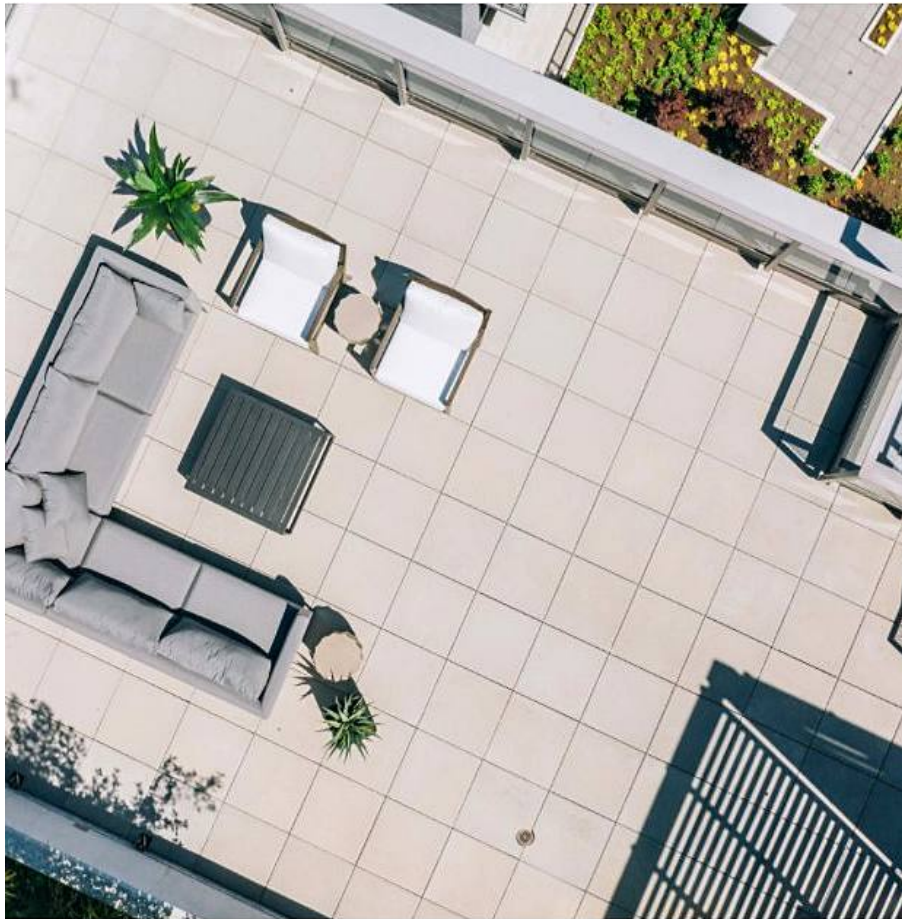


# Ph1005 3451 Sawmill Crescent, Vancouver

\$864,900



THIS IS THE ONE YOU HAVE BEEN WAITING FOR! Move into one of Quartet's spectacular penthouse level corner 2BED + FLEX. This well thought out 2bdm home features an open concept layout w/ bdrm & separated & nice sized walk in closet in the master, modern & stunning kitchen w/ Jenn Air appliances, high efficiency heating & cooling system. Relax on your exquisite private rooftop terrace & enjoy a home-cooked meal al fresco. Quartet is just steps to Save-On, Starbucks, restaurants, banks & shops. Residents will have access to Club Central, the 14,000+SF private fitness&aquatic Centre & additional amenities including an onsite concierge, secure delivery storage for convenient pickup, music & study rooms, Bocce court & more! 1 Parking included. OPEN HOUSE SAT, OCT 24, 1:30-3:30PM

## KEY INFORMATION

MLS® R2509559

Residential Attached

South Marine

2 Bedrooms

2 Bathrooms

915 SF

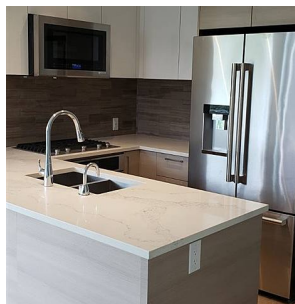
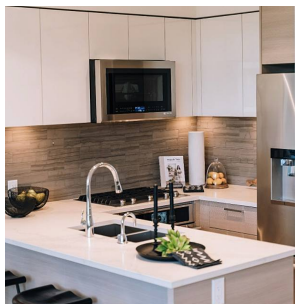
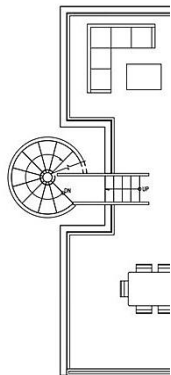
\$549.00 Maintenance Fees

## FEATURES

Year Built: 2020

Views: CITY AND GREENERY

Listed By: rennie & associates realty ltd.



**Derek Kai** PREC\*  
604.868.1666  
dkai@rennie.com  
rennie.com/derekkai



**Salina Kai** PREC\*  
604.773.7013  
skai@rennie.com  
rennie.com/salinakai

**rennie**