

2307 1480 Howe Street, Vancouver

\$799,800



Architect Series 1-bed, boasting extra-wide frontage with wall-to-wall windows that are dramatically angled to take in unobstructed views of English Bay. The optimised floor plan features high ceilings, natural light, and an overall minimalist design with open-concept living, dining, and kitchen areas that are extended by the generous terrace — accessible through both the dining area and the bedroom. BIG designed interiors feature a linear kitchen with corian counters, copper backsplash, european mattelaminated cabinets + miele appliance package. The bathroom is finished with large format travertine, duravit toilet + sink, and BIG-designed custom plumbing fixtures by Kohler. 1 (EV) parking and 1 locker come provided. Be among the first to own at Vancouver House.

KEY INFORMATION

MLS® R2510172

Residential Attached

Yaletown

1 Bedroom

1 Bathroom

514 SF

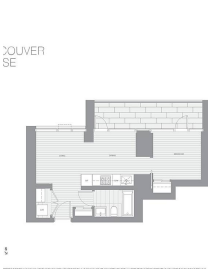
\$457.21 Maintenance Fees

FEATURES

Year Built: 2020

Views: ENGLISH BAY, CITY & MOUNTAIN

Listed By: rennie & associates realty ltd.



Christopher Boyd PREC*
604.351.0533
cboyd@rennie.com
rennie.com/christopherboyd



Jane Chu PREC*
778.886.3303
janechu@rennie.com
rennie.com/janechu

rennie