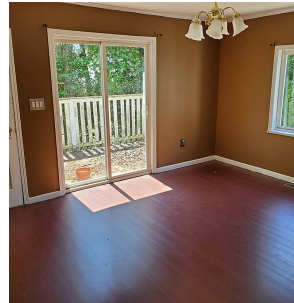
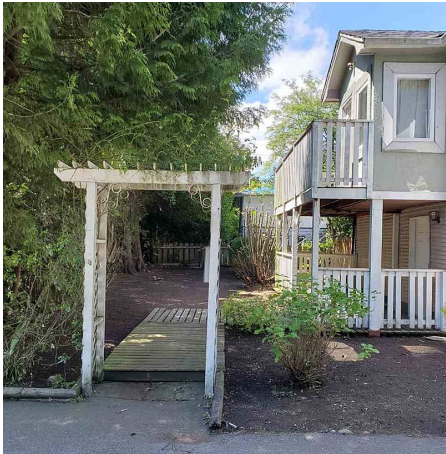


16025 16 Avenue, Surrey

\$1,099,000



A unique & prime opportunity to OWN, HOLD, BUILD or DEVELOP along KING GEORGE CORRIDOR in the desirable community of Sunnyside. The City of Surrey Official Community Plan designates the General Land use for the prop as Low Density Multi-Res (15 U.P.A.) within the KGH Corridor Development Concept Plan. The properties are designated "Urban" in the Official Community Plan and "Townhouse" in the KGH Corridor NCP, which is intended to support a small neighbourhood-oriented, street-oriented residential dwellings. The current "Townhouse" designations permits up to 15 units per acre. ACCEPTED OFFER AT \$1,025,000. COURT APPROVAL DATE SET FOR WED. DEC. 9, 2020 AT 9:45AM. ALL COMPETING OFFERS MUST BE SUBMITTED BY 12PM NOON ON MON. DEC. 7, 2020 TO THE LIQUIDATOR'S LEGAL COUNSEL. CALL FOR INFO.

KEY INFORMATION

MLS® R2512206

Residential Detached

King George Corridor

3 Bedrooms

3 Bathrooms

1,528 SF

8,604 SF Lot

FEATURES

Year Built: 1950

Listed By: rennie & associates realty ltd.



Ryan Wong PREC*
604.551.7966
rwong@rennie.com
rennie.com/ryanwong

rennie