

# Sph3801 889 Pacific Street, Vancouver

\$9,250,900



Sub Penthouse Residence at THE PACIFIC by GROSVENOR! Sensational panoramic views of the English Bay, False Creek, sunsets & Yaletown can be enjoyed from every vantage point of this home, with the North, West, East exposures. A Timeless design, World Class views, elegant home at Pacific & Hornby in Downtown Vancouver. This masterfully designed 2791 SF 4- Bedroom home offers open concept living, private master suite, and more. Interiors have been meticulously planned for ultimate form, Italian Snaidero cabinetry, kitchens outfitted with professional-grade SubZero, Wolf & Miele appliances. Includes spectacular 405 SF of outdoor living space stretch the full width of each home for max. natural light & views galore! Amenities: 24-hour concierge, Fitness Centre, Lounge, & outdoor terrace.

## KEY INFORMATION

MLS® R2513049

Residential Attached

Downtown

4 Bedrooms

4 Bathrooms

2,791 SF

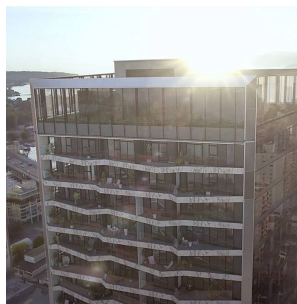
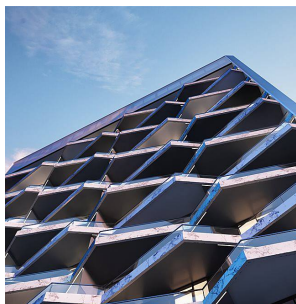
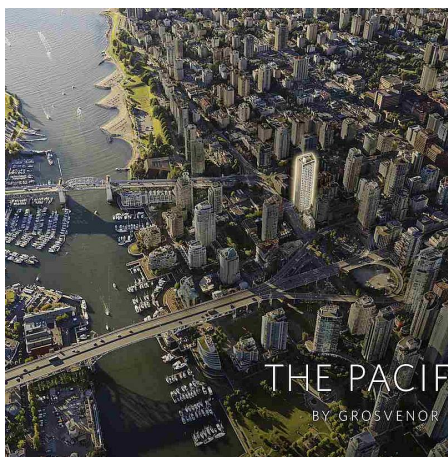
\$1,365.28 Maintenance Fees

## FEATURES

Year Built: 2021

Views: WATER, CITY, MOUNTAIN

Listed By: rennie & associates realty ltd.



**Phil Chang** PREC\*  
604.754.6678  
pchang@rennie.com  
rennie.com/philchang



**Deanna Lythgo** PREC\*  
778.840.3170  
dlythgo@rennie.com  
rennie.com/deannalythgo

**rennie**