

# 311 3420 Bell Avenue, Burnaby

\$449,000



ONE OF A KIND PENTHOUSE UNIT WITH OVERHEIGHT CEILING - RENOVATED 2 BEDROOM in well maintained building. Features: laminate flooring, stainless steel appliances, in suite laundry, quartz counter tops, white wood cabinetry and glass tile back splash. Very bright east exposure with tons of natural light. Large balcony for entertaining. Central location, walk to bus/skytrain station, Lougheed Mall, Cameron Centre & Library. Close to SFU, Costco, IKEA. Maintenance fees include Heat. 1 Parking and 1 Storage Locker.

## KEY INFORMATION

MLS® R2515533

Residential Attached

Sullivan Heights

2 Bedrooms

1 Bathroom

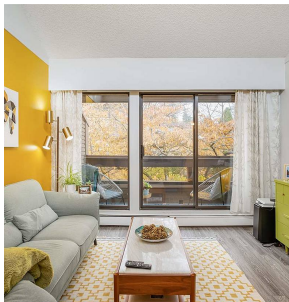
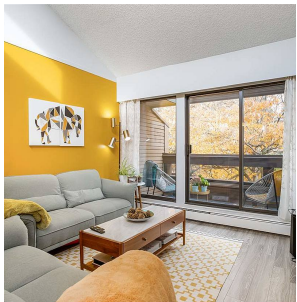
872 SF

\$338.77 Maintenance Fees

## FEATURES

Year Built: 1982

Listed By: rennie & associates realty ltd.



**Matthew Lee**  
778.882.2673  
mlee@rennie.com  
rennie.com/matthewlee



**Calvin Kan** PREC\*  
604.616.8373  
ckan@rennie.com  
rennie.com/calvinkan

**rennie**