

744 Sproule Avenue, Coquitlam

\$849,900



Are you looking for a perfect home for a growing family or an investment property with a big redevelopment potential? This is the one! This very well-maintained 2-level 1/2 Duplex at the end of a quiet cul-de-sac in a highly desirable Burquitlam area has everything you would expect from a house, but for the price of a townhouse! A great spacious layout, large 3 bedrooms and an office which can be the 4th bdrm, lots of storage room + a huge crawl space, fully fenced and private backyard, a carport for 1 car and additional 2 parking spaces. Nearly 3,900 sqft lot with the lane access. Walking distance to all levels of schools, parks, skytrain station, shopping and recreational facilities. No strata fees! The land designation has been changed to townhouses. Check the details with the City Hall.

KEY INFORMATION

MLS® R2520527

Residential Attached

Coquitlam West

3 Bedrooms

2 Bathrooms

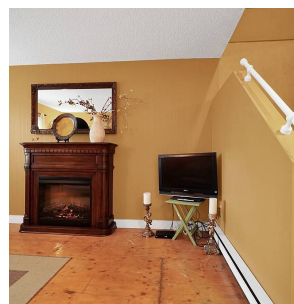
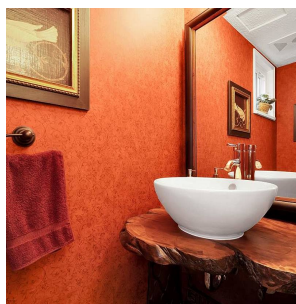
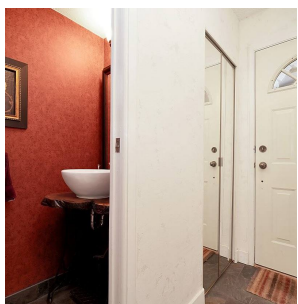
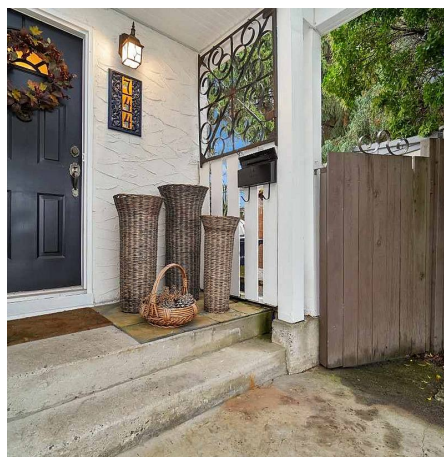
1,394 SF

3,900 SF Lot

FEATURES

Year Built: 1977

Listed By: rennie & associates realty ltd.



Art Seroff PREC*
778.223.0033
aseroff@rennie.com
rennie.com/artseroff

rennie