

103 2559 Parkview Lane, Port Coquitlam

\$499,000



Beautifully updated and private, this corner unit shares no common walls! Open floor plan is sunny and bright featuring south-facing windows, satellite bedrooms, master bedroom has WIC and ensuite. New kitchen, appliances, flooring, and paint- this is your next move-in ready home! Amazing wrap around patio is covered and private, perfect for entertaining. Popular building with clubhouse, gym, sauna, great commuter access, close to parks and trails. Call today for your private viewing!

KEY INFORMATION

MLS® R2521504

Residential Attached

Central Port Coquitlam

2 Bedrooms

2 Bathrooms

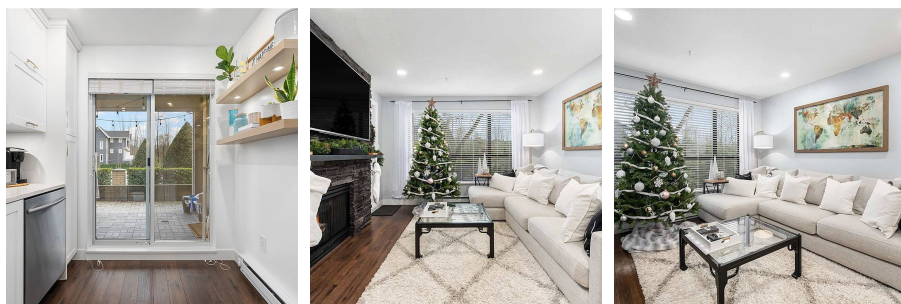
962 SF

\$368.94 Maintenance Fees

FEATURES

Year Built: 1996

Listed By: rennie & associates realty ltd.



Brandon Blue PREC*

604.999.7792

bblue@rennie.com

rennie.com/brandonblue

rennie