

# 23403 Lougheed Highway, Maple Ridge

\$766,000



Need MORE YARD or a BIGGER HOME? Want to build your next "Dream Home" or start a "Hobby Farm"? Fantastic opportunity to acquire an individual lot or combination of lots ranging in size from 1.83 to 5.34 acres in the Albion Flats Urban Area of Maple Ridge - significant upside and value in one of BC's fastest-growing suburban markets. An outdoor enthusiast's dream! The lots are centrally located a short walk from Kanaka Creek Park Greenway, Albion FairGrounds, Albion Sports Complex & Fields, Planet Ice and the Fraser River Waterfront. Close proximity to Schools / Parks, West Coast Express and minutes away from Downtown Maple Ridge, Historic Bruce's Country Market and all the Amenities of a City while enjoying a laid-back country lifestyle. Lots are zoned RS-3 (One Family Rural Residential).

## KEY INFORMATION

MLS® R2521645

Land Only

Albion

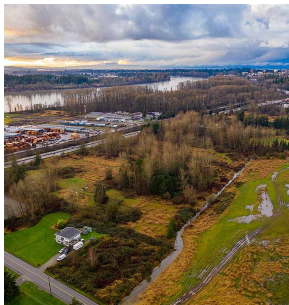
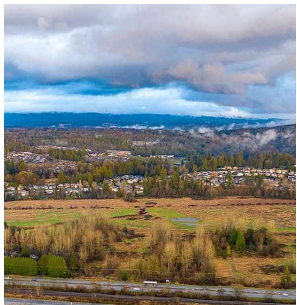
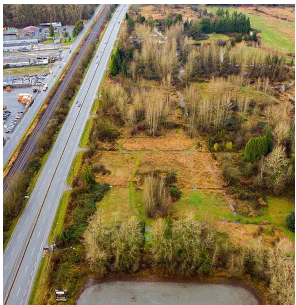
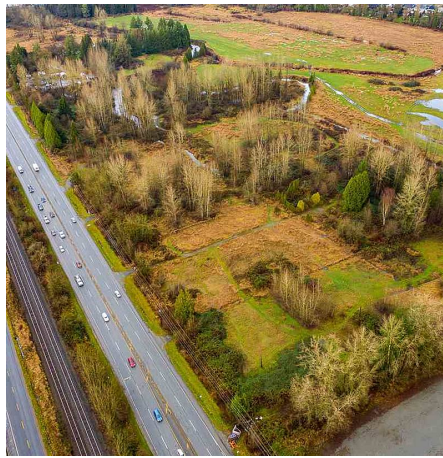
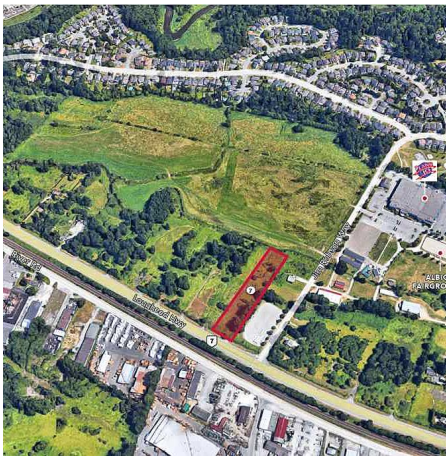
0 Bedrooms

0 Bathrooms

0 SF

## FEATURES

Listed By: Lee & Associates Vancouver



rennie