

807 433 Sw Marine Drive, Vancouver

\$859,000



W1 by Concord Pacific, located at Cambie & SW Marine Drive. This corner unit has an open concept with lots of daylight. Spacious gourmet kitchen with Miele appliances, marble countertop and a kitchen island. Good-sized bedrooms and bathrooms. 24 hours concierge and amenities including a clubhouse, touchless carwash, party and meeting rooms, a karaoke room and gym. Steps away from the Canada line, shopping, restaurants and movie theatre. School catchment is J.W. Sexsmith Elementary and Sir Winston Churchill Secondary. Priced to sell!

KEY INFORMATION

MLS® R2521941

Residential Attached

Marpole

2 Bedrooms

2 Bathrooms

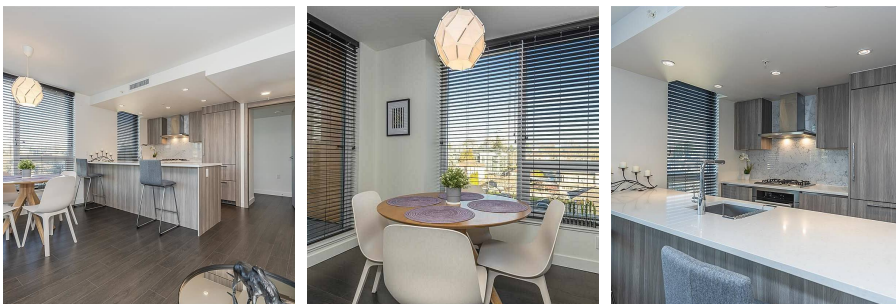
872 SF

\$480.45 Maintenance Fees

FEATURES

Year Built: 2019

Listed By: rennie & associates realty ltd.



Vivien Ma PREC*
604.828.2268
vma@rennie.com
rennie.com/vivienma

rennie