

2230 Sw Marine Drive, Vancouver

\$6,980,000



An estate built on over an acre of land along SW Marine Drive on Vancouver's West side. Beautiful view of Fraser River to the Gulf islands with incredible Sunsets. A short drive to Vancouver international Airport, Richmond, and UBC, with Golf course nearby. Minutes to McKenzie Elementary School, Magee Secondary school & neighborhood parks. A rare opportunity to own over an acre of land to build your dream house set among some of Vancouver's most prestigious estates. The design drawing is ready to build over 17500 sqft of the new house.

KEY INFORMATION

MLS® R2522565

Residential Detached

Southlands

4 Bedrooms

5 Bathrooms

4,443 SF

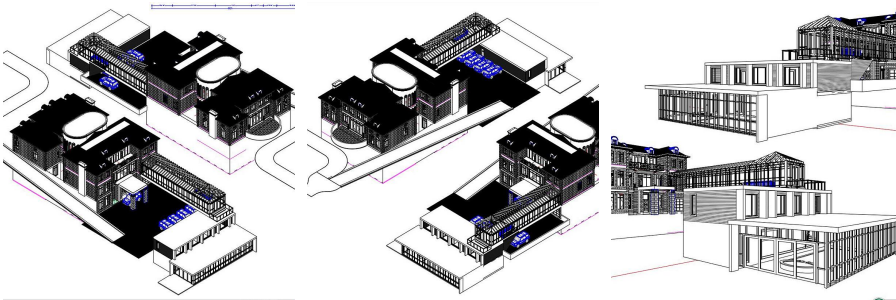
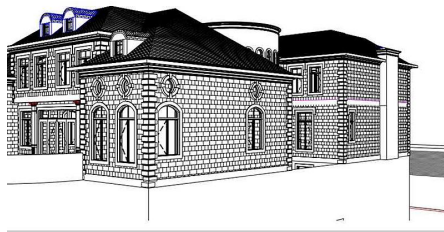
47,357 SF Lot

FEATURES

Year Built: 9999

Views: GOLF COURSE/FRASER VALLEY

Listed By: Royal Pacific Realty (Kingsway) Ltd.



rennie