

1018 8800 Hazelbridge Way, Richmond

\$799,000



BEST PRICE \$/sft 2 bedroom & 2 bathroom
SOUTH facing at Concord Gardens by Concord Pacific. Beautiful covered but southern sunny big deck , great size living room dining room and master bedroom. Extremely well kept, bright and spacious. Open concept floor plan featuring floor to ceiling windows, high end S/S BOSCH appliances, laminated floors, quartz kitchen countertops, and more. Very central and convenient location, steps from Shopping Centre, restaurants, buses and the future Capstan Way Skytrain. The amazing 20,000 sqft Diamond Club, an ultimate playground for entertainment, amenities a bowling alley, badminton court, indoor swimming pool, private screening, and more. This is a must see. 1 Parking & 1 Locker ****Viewings by Appointment Only****

KEY INFORMATION

MLS® R2523265

Residential Attached

West Cambie

2 Bedrooms

2 Bathrooms

891 SF

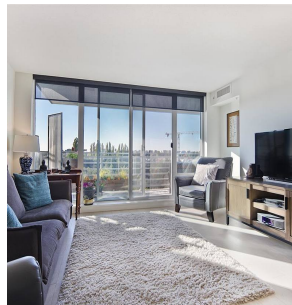
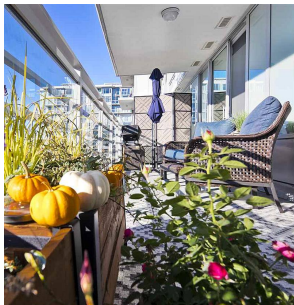
\$445.00 Maintenance Fees

FEATURES

Year Built: 2020

Views: GARDEN

Listed By: rennie & associates realty ltd.



Hanson Lu PREC*
604.787.2578
hlu@rennie.com
rennie.com/hansonlu

rennie