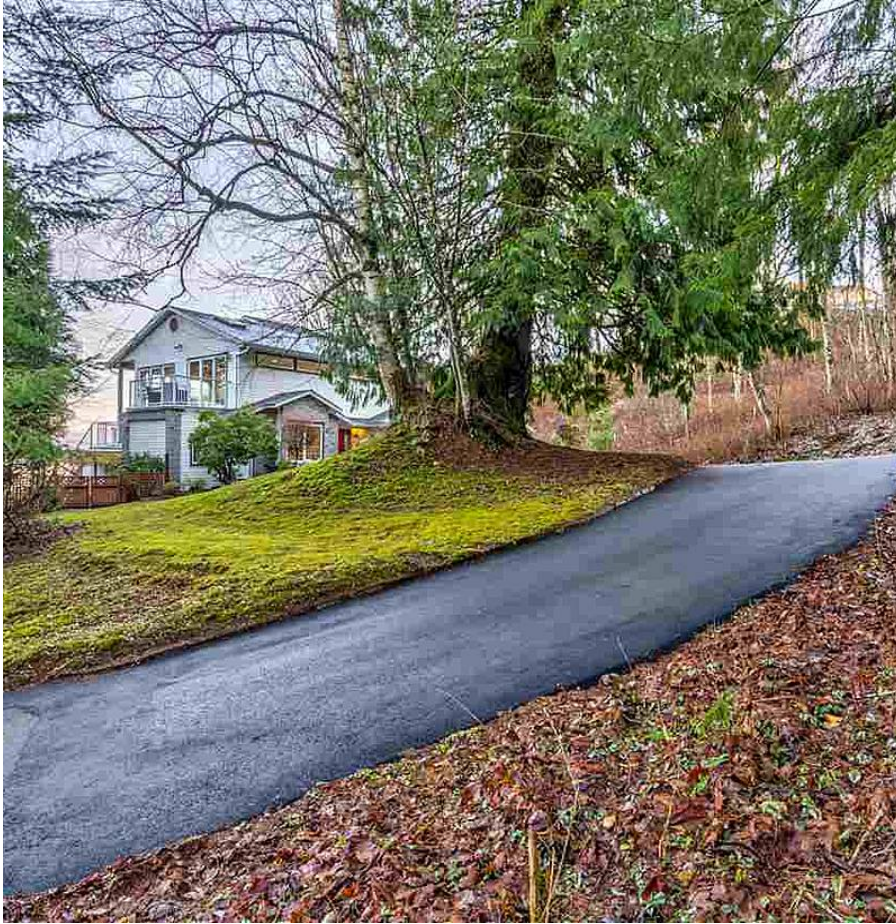


8673 Grand View Drive, Chilliwack

\$1,199,900



Desired acreage on Chilliwack Mountain. This 4 level split will WOW you! A unique 3500sf, 4 bed, 5 bath home located on 1.38 PRIVATE and SECLUDED acres. Wall to wall windows on the main level and a bright open floor plan. A chef's kitchen with granite counters, double ovens, range top, deluxe sink, double fridge/freezer 12 foot ceilings and a loft & balcony above. Enjoy a formal dining area and living room with AMAZING VIEWS and a beautiful deck for outdoor living. The Master bedroom is huge with a balcony and a spectacular master bathroom + MASSIVE walk-in closet. Two spacious bedrooms both have their own ensuites! Tons of storage, double car garage & a gym. Also has, alarm system, R/I Vac, several skylights and cozy gas fireplace. Luxury & quality throughout! THIS ONE WON'T LAST!

KEY INFORMATION

MLS® R2523881

Residential Detached

Chilliwack

4 Bedrooms

5 Bathrooms

3,539 SF

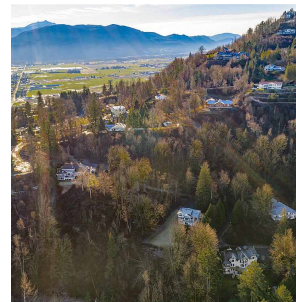
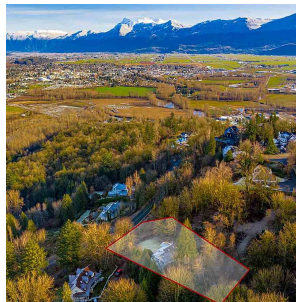
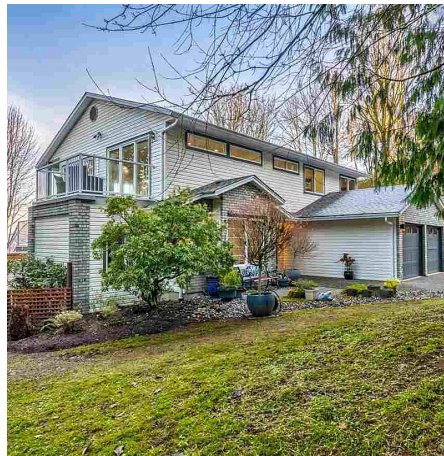
60,024 SF Lot

FEATURES

Year Built: 1992

Views: MOUNTAINS & VALLEY

Listed By: rennie & associates realty ltd.



Clarke Mallory PREC*
604.316.9917
cmallory@rennie.com
rennie.com/clarkemallory

rennie