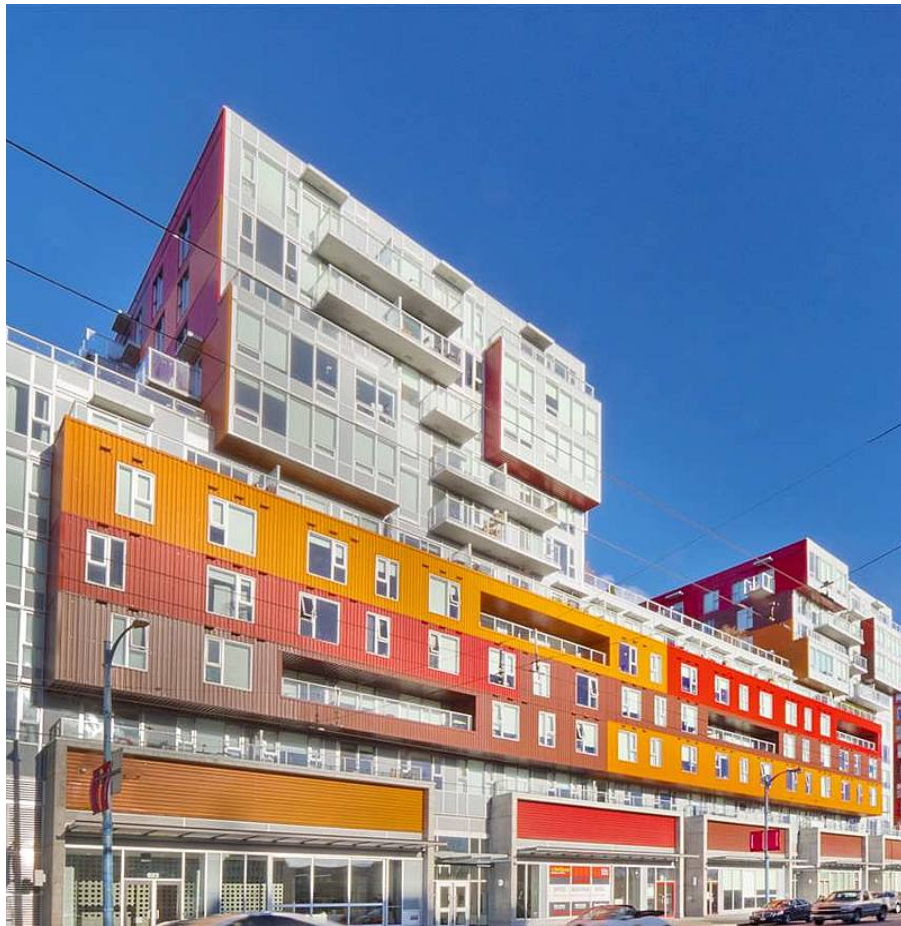


1006 955 E Hastings Street, Vancouver

\$499,900



Strathcona Village! Sub-Penthouse unit located at the quiet side of the building with views of the city, mountain and water! Open concept functional layout, with a chef's kitchen and sleek S/S appliances and quartz countertop and backsplash. Amenities: fully equipped Fitness Centre, meeting rooms, Multiple outdoor landscaped spaces for entertaining, gathering, reading book & stunning Patio gas fire bowl. Only a 5-minute walk to Strathcona Park and two blocks to VPL. Quick access to Gastown, Chinatown, E. Village and Commercial Dr. Easy access to transit, bike paths, Seabus, Skytrain, Canada Line and HWY1. Pets and Rental welcome. One parking and storage locker included.

KEY INFORMATION

MLS® R2524905

Residential Attached

Strathcona

1 Bedroom

1 Bathroom

546 SF

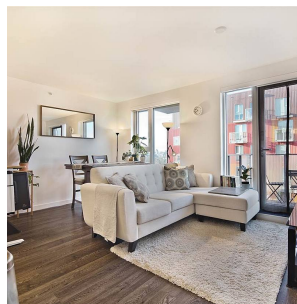
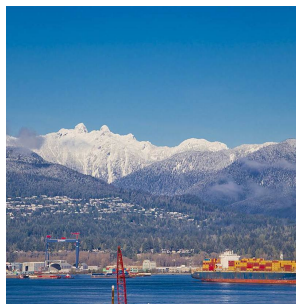
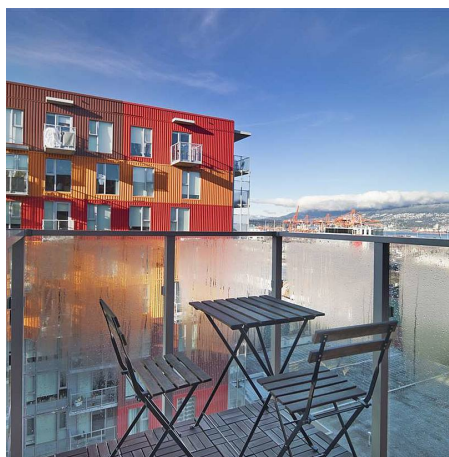
\$308.30 Maintenance Fees

FEATURES

Year Built: 2018

Views: CITY, MOUNTAIN, WATER

Listed By: rennie & associates realty ltd.



Hanson Lu PREC*
604.787.2578
hlu@rennie.com
rennie.com/hansonlu

rennie