

2605 1188 Pinetree Way, Coquitlam

\$665,000



M3, Iconic building in Heart of Coquitlam center. Quality built by renowned Cressey Development. Practical floorplan, no wasted area. Famous "Cressey" kitchen w full-size pull-out pantry/4-door fridge/built-in oven/MW, loads of cupboards, quartz countertop, wine cellar, heated floor in bathrm, 1 parking/1 locker. Quiet NW corner, beautiful lake/sunset/mountain/city views. well-kept. Unique Summit Club on top 47/48 floor w/ 360 degree panoramic views of mountains/water/Mt. Baker/Bridge, modern lounge/gym/yoga/music rm. Stroll to Lafarge Lake and picturesque neighbourhood. Walk to Skytrain/shoppings/restaurants/aquatic center/ Douglas College/community center/schools/city hall/library,etc. Superb convenient. Great to live-in or to invest.

KEY INFORMATION

MLS® R2527415

Residential Attached

North Coquitlam

2 Bedrooms

2 Bathrooms

809 SF

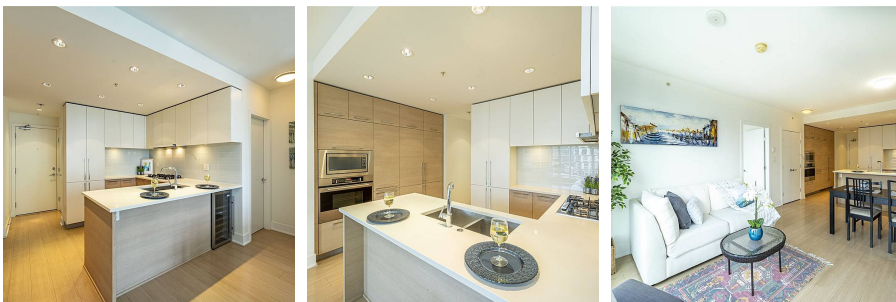
\$291.38 Maintenance Fees

FEATURES

Year Built: 2016

Views: LAKE/SUNSET/MOUNTAIN

Listed By: rennie & associates realty ltd.



Calvin Jiang
604.961.1698
cjiang@rennie.com
rennie.com/calvinjiang

rennie