

16090 92a Avenue, Surrey

\$1,398,800



Live on the park in Fleetwood! Large 5 bedroom family home with optional in-law suite set up. Great opportunity to bring your decorating ideas to life and make a home of your own on a quiet loop subdivision in Fleetwood. Backing right onto Serpentine Heights Park and Elementary School and a short walk to Fleetwood Park Village this is one of Surrey's best locations. Plenty of room to spread the family out over two levels, with 3 bedrooms up and 2 bedrooms down, or bring the in-laws! The ground floor walk out level features a butler's kitchen, sliding glass doors and a gas fireplace in the living room.

KEY INFORMATION

MLS® R2528298

Residential Detached

Fleetwood Tynehead

4 Bedrooms

3 Bathrooms

2,545 SF

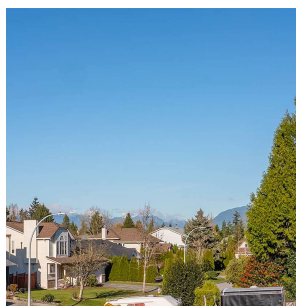
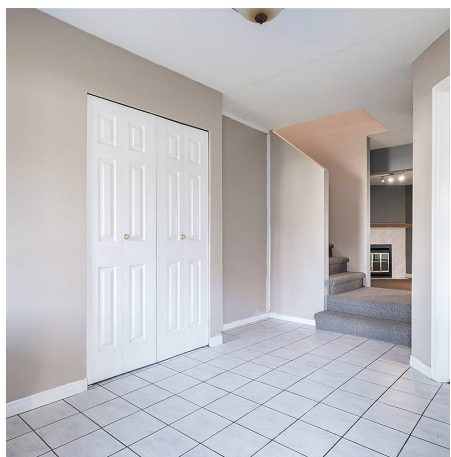
8,428 SF Lot

FEATURES

Year Built: 1989

Views: MOUNTAINS, BACKS TO PARK

Listed By: rennie & associates realty ltd.



Joanne Hoekstra

604.722.6645

jhoekstra@rennie.com

rennie.com/joannehoekstra



Sarah Reimer

778.968.5247

sreimer@rennie.com

rennie.com/sarahreimer

rennie