

608 2220 Kingsway, Vancouver

\$868,800



Stunning 2 Level 2 BDR and Guest Room Podium PH w/Patio & Rooftop Deck at Kensington Gardens. Enter the main floor of this bright & spacious corner unit w/light laminate floors, A/C OH Ceilings, powder room & balcony with open city & mtn views. Gourmet kitchen w/Miele gas stove & stone ctrs w/breakfast bar seating. Entertain in the open livrm/dinrm w/ floor to ceiling windows w/ fabric roller blinds. Retreat upstairs to 2 bdrms w/ WI closets, 2 full baths & private S facing patio plus a 400 Sqft rooftop deck! Incredible amenities incl. concierge, heated outdoor pool, sauna, gym, lounge & much more! Great location - steps to T & T Supermarket, restaurants along Kingsway & quick access downtown. Walking distance to Gladstone Secondary & General Brock Park. 1 Parking & 1 Locker Included.

KEY INFORMATION

MLS® R2528682

Residential Attached

Victoria

2 Bedrooms

3 Bathrooms

1,056 SF

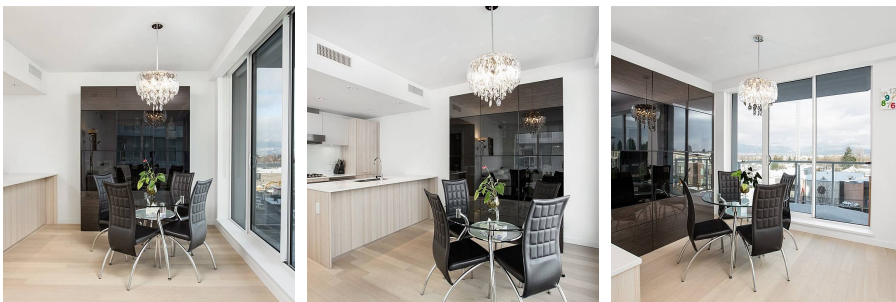
\$777.25 Maintenance Fees

FEATURES

Year Built: 2018

Views: CITY AND NORTH SHORE MTNS

Listed By: rennie & associates realty ltd.



Salina Kai PREC*
604.773.7013
skai@rennie.com
rennie.com/salinakai



Danny Chow PREC*
604.765.2469
dchow@rennie.com
rennie.com/dannychow

rennie