

507 638 Beach Crescent, Vancouver

\$1,290,000



Welcome home to the desirable Icon 1 tower in the newly developed Beach District. This coveted 2 bed / 2 bath 07 floorplan features an efficient layout overlooking George Wainborn park with city and water views. The convenient location is steps to Sunset Beach, Sea Wall and all of the newly developed amenities of The Beach District including Fresh Street Market, London Drugs, House Concepts Fitness, and some of Vancouver's best restaurants. Air Conditioned unit with patio overlooking the park with large in suite storage that could easily be converted to a home office. One parking spot, 24/7 concierge and amazing in-house amenities including pool, hot tub, sauna and movie theatre. Showings by appointment. Have your realtor book you a time!

KEY INFORMATION

MLS® R2530855

Residential Attached

Yaletown

2 Bedrooms

2 Bathrooms

1,057 SF

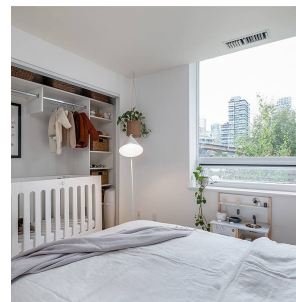
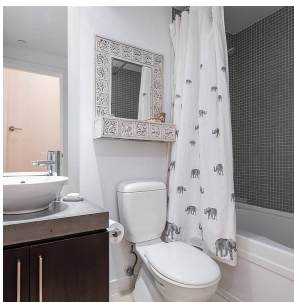
\$683.71 Maintenance Fees

FEATURES

Year Built: 2006

Views: WATER AND PARK

Listed By: rennie & associates realty ltd.



Samson Danniels

778.989.2454

sdanniels@rennie.com

rennie.com/samsondanniels

rennie