

1010 688 Abbott Street, Vancouver

\$599,000



Enjoy captivating panoramic views from this 10th floor SE-facing 1-bed + Den + Solarium at popular Firenze, built in 2007. Features include open-concept kitchen with bar and granite counters, S/S appliances, laminate flooring, electric fireplace, and insuite laundry. Fabulous amenities include a 25m indoor pool, hot tub, sauna, gym, and garden courtyard. Located directly on Andy Livingston Park and steps to Rogers Arena, Stadium Skytrain Station, and Vancouver Seawall. Currently tenanted for \$2,405/month. Airbnb/short-term rentals and 2 Pets are allowed. 1 underground parking stall included. Furniture included in sale. Turn-key with high return potential. Showings starting Sunday Jan 24, 2021.

KEY INFORMATION

MLS® R2531127

Residential Attached

Downtown

1 Bedroom

1 Bathroom

617 SF

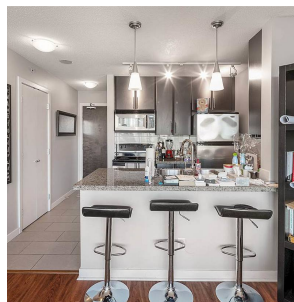
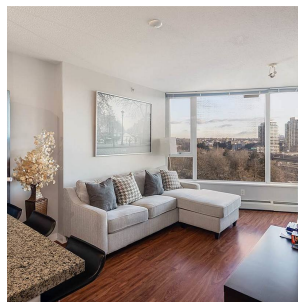
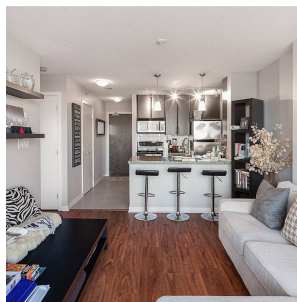
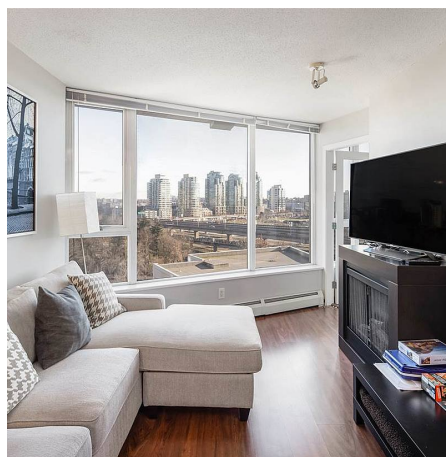
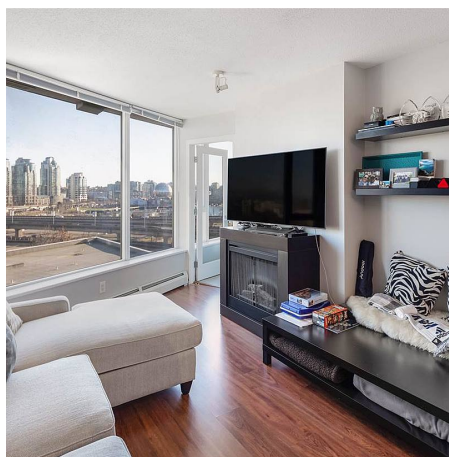
\$350.00 Maintenance Fees

FEATURES

Year Built: 2007

Views: PANO: PARK, FALSE CREEK, MTN

Listed By: rennie & associates realty ltd.



Mike Ross
778.987.8874
mross@rennie.com
rennie.com/mikeros

rennie