

104 1515 Chesterfield Avenue, North Vancouver

\$588,000



Welcome to 1515 Chesterfield. This is the ultimate work & play lifestyle home in central Lonsdale with an incredible combination of features you'd normally find in a townhouse. The spacious, designer layout features a home office nook with built-in cabinets and L-shaped desk off the generous chef-approved kitchen. Move in and get to work with no reno required! The south facing, 403 sq ft patio is perfect for entertaining or relaxing, with a private second entrance onto 15th Ave. The owners built a secure 6' x 8' shed with a workbench offers plenty of room to maintain and store bikes and skis. The large bedroom comes with plenty of built-in wardrobe space and a cheater ensuite. Fresh paint and a new roof are the most recent building improvements. Come and have a look this weekend.

KEY INFORMATION

MLS® R2531186

Residential Attached

Central Lonsdale

1 Bedroom

1 Bathroom

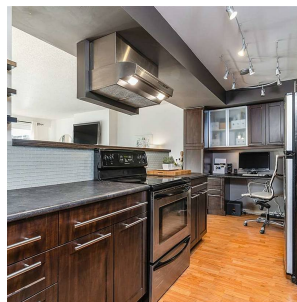
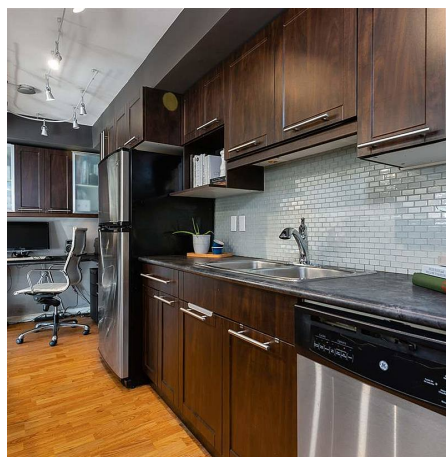
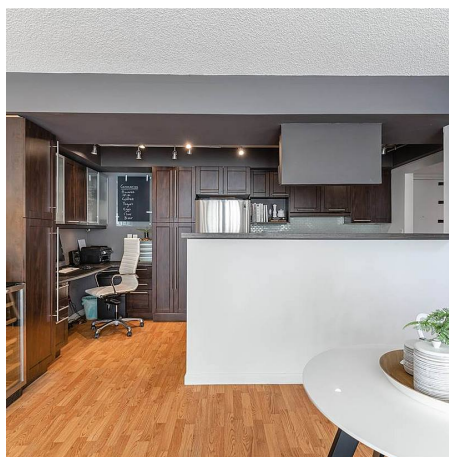
752 SF

\$388.00 Maintenance Fees

FEATURES

Year Built: 1973

Listed By: rennie & associates realty ltd.



Matt Stone
604.782.2614
mstone@rennie.com
rennie.com/mattstone

rennie